

# 101 WILLIAM

×

# 59 MAIDEN

50,000 SF OF RETAIL | 32,000 SF OF OUTDOOR PLAZA SPACE  
1 MILLION SF OF OFFICE SPACE

**FINANCIAL DISTRICT, NYC**  
40°42'30.9"N 74°00'27.8"W



# The Financial District

The Financial District has transformed from a transient NYC submarket into an elevated neighborhood. Over a decade of investing and development has turned FiDi into an urban oasis with beautiful green spaces and stunning waterfronts.

FiDi is a 24-hour neighborhood, servicing locals, business professionals, and tourists alike. Surrounded by luxury residential, hotel, fine dining, fitness, and state of the art office, 101 William x 59 Maiden presents a once in a generation flagship retail opportunity.

The Financial District is the place to be.  
Live. Play. Eat. Shop...FiDi





# The Space

Available retail

**50,000 SF**

Outdoor plaza space

**32,000 SF**

Office space

**1.3 Million SF**

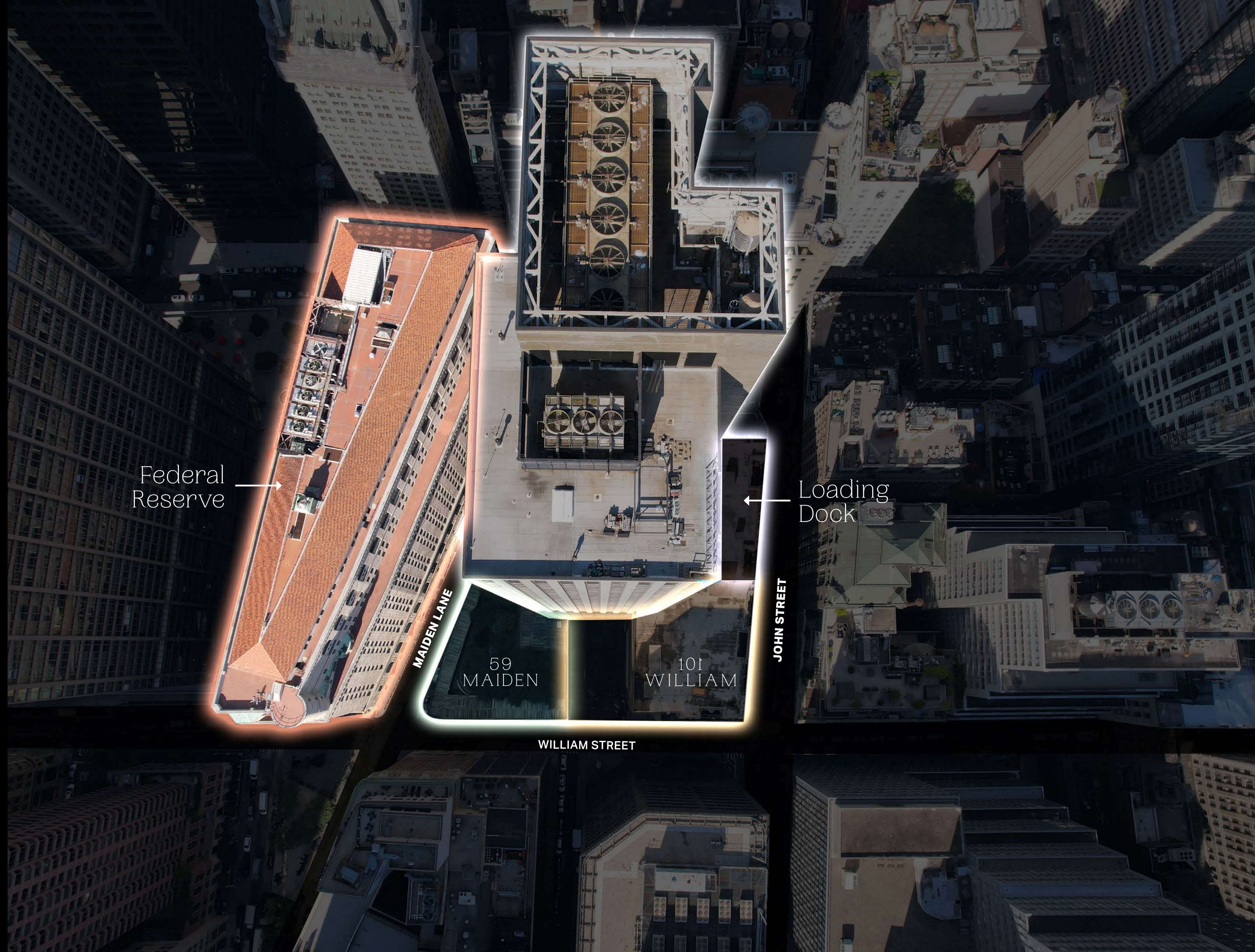
Across from

**Federal Reserve**

Wraparound frontage

**300 FT**

**CLICK HERE FOR A NARRATED  
VIDEO TOUR OF THE SPACE**





VIRTUAL  
TOUR



EXPLORE  
101 WILLIAM



DIVISION  
SCENARIOS

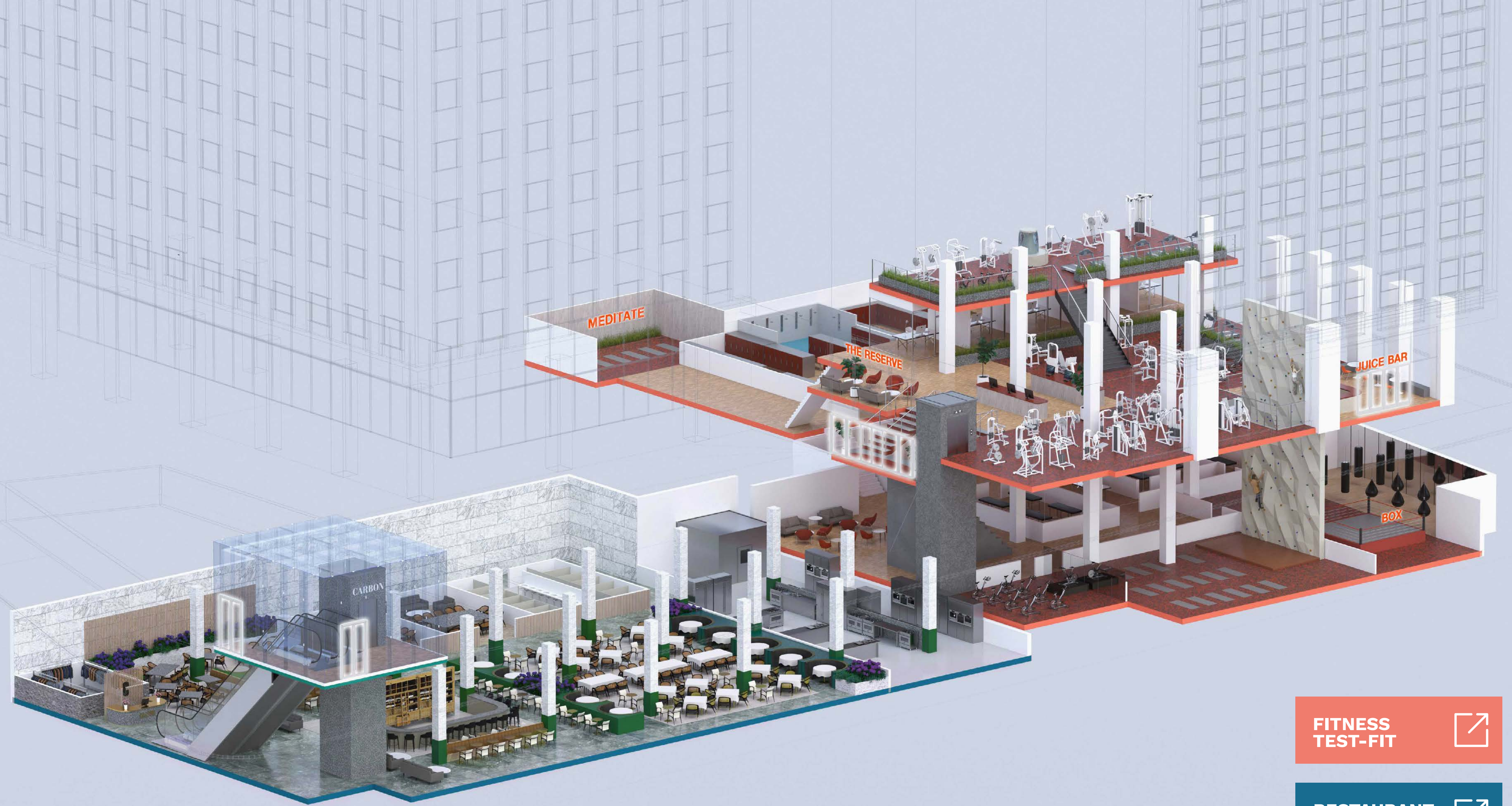


EXPLORE  
59 MAIDEN



59  
CARBON





FITNESS  
TEST-FIT



RESTAURANT  
TEST-FIT











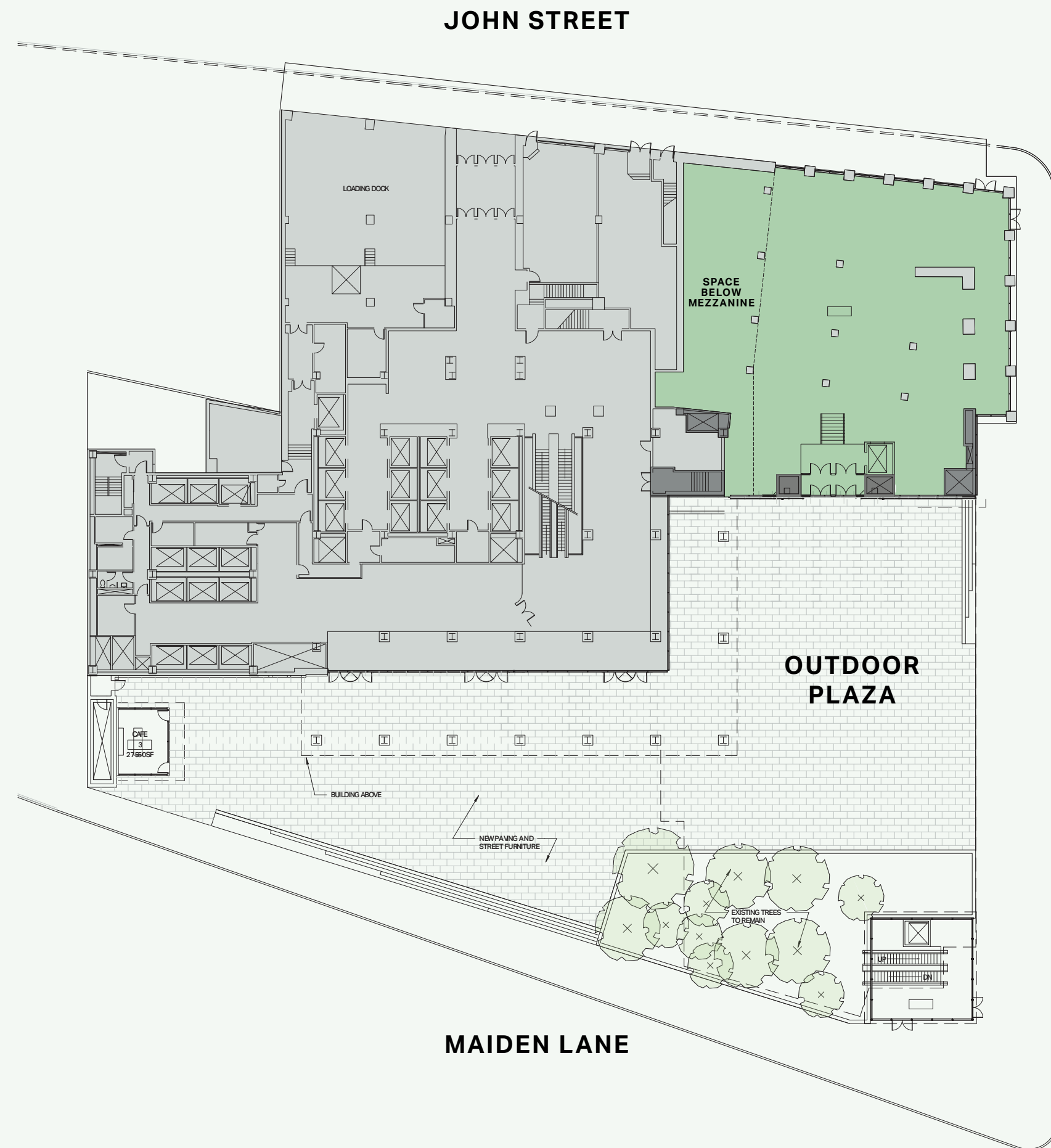


# 101 William

## Ground Retail

7,504 SF

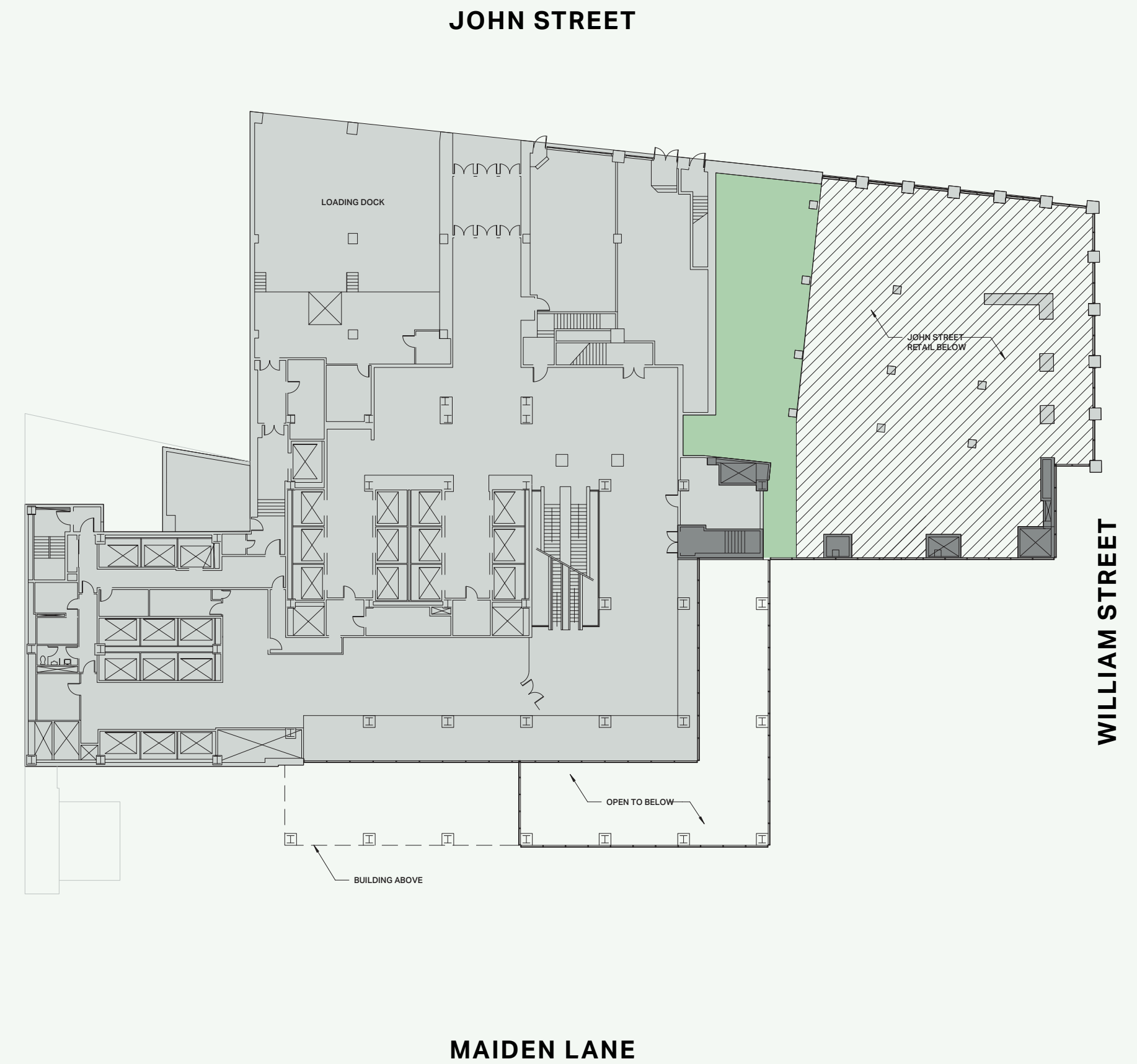
Ceiling Height: 20.5'



## Mezzanine Retail

1,628 SF

Ceiling Height: 10'



[Back to master plan](#) →

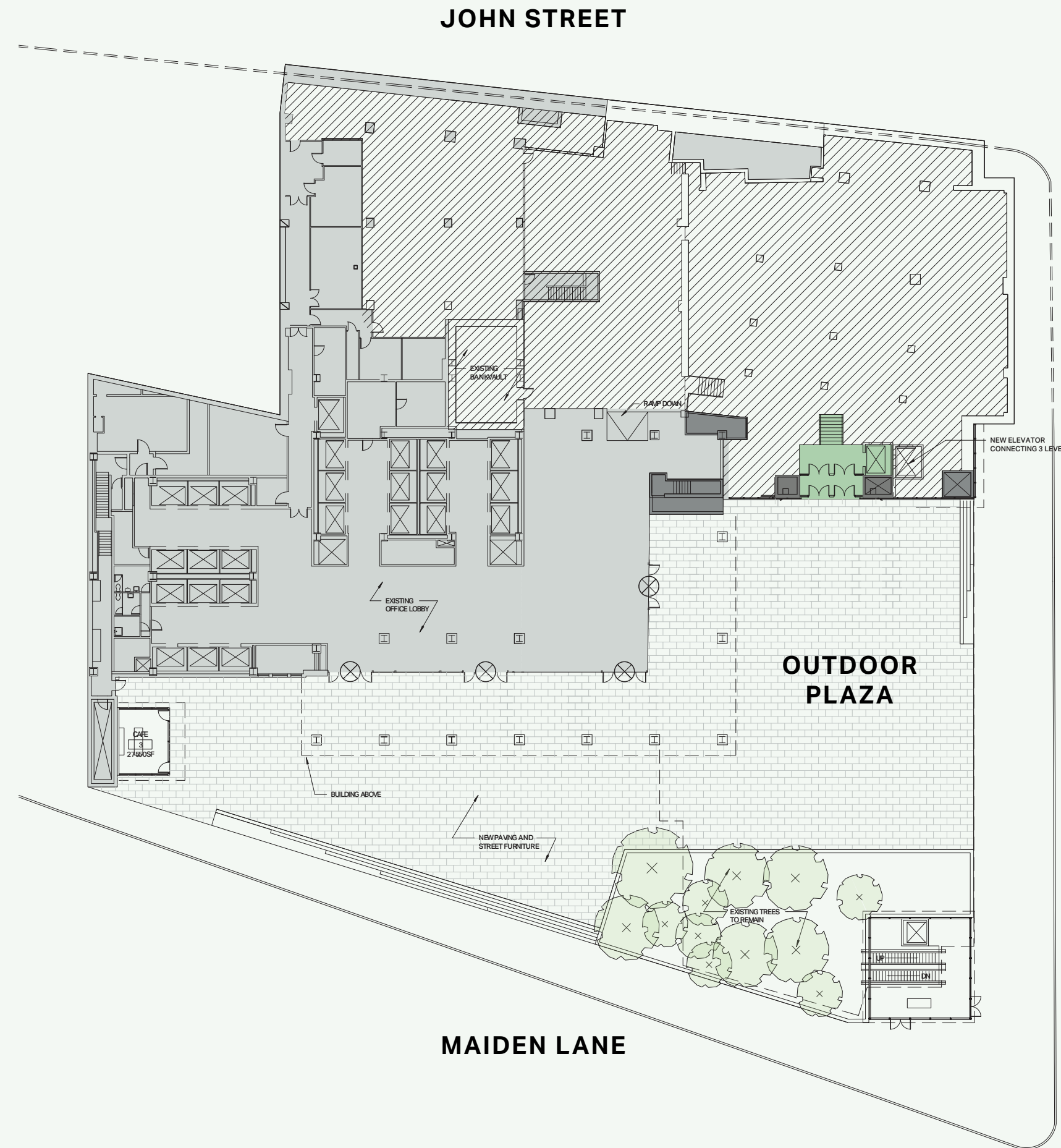


# 101 William

## Retail Plaza Entrance

388 SF

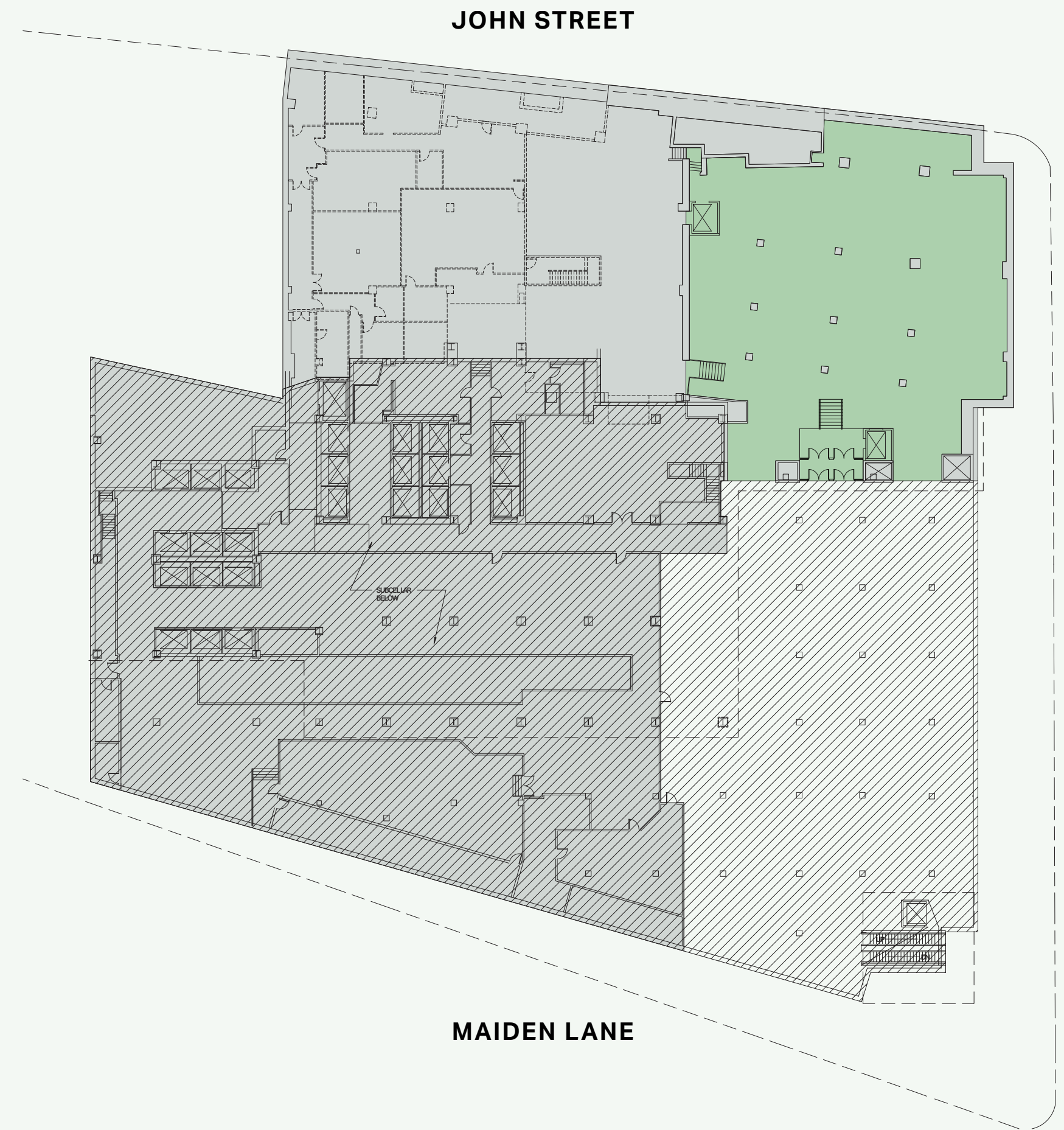
Ceiling Height: 11'



## Lower Level Retail

8,585 SF

Ceiling Height: 12'



[Back to master plan](#) →

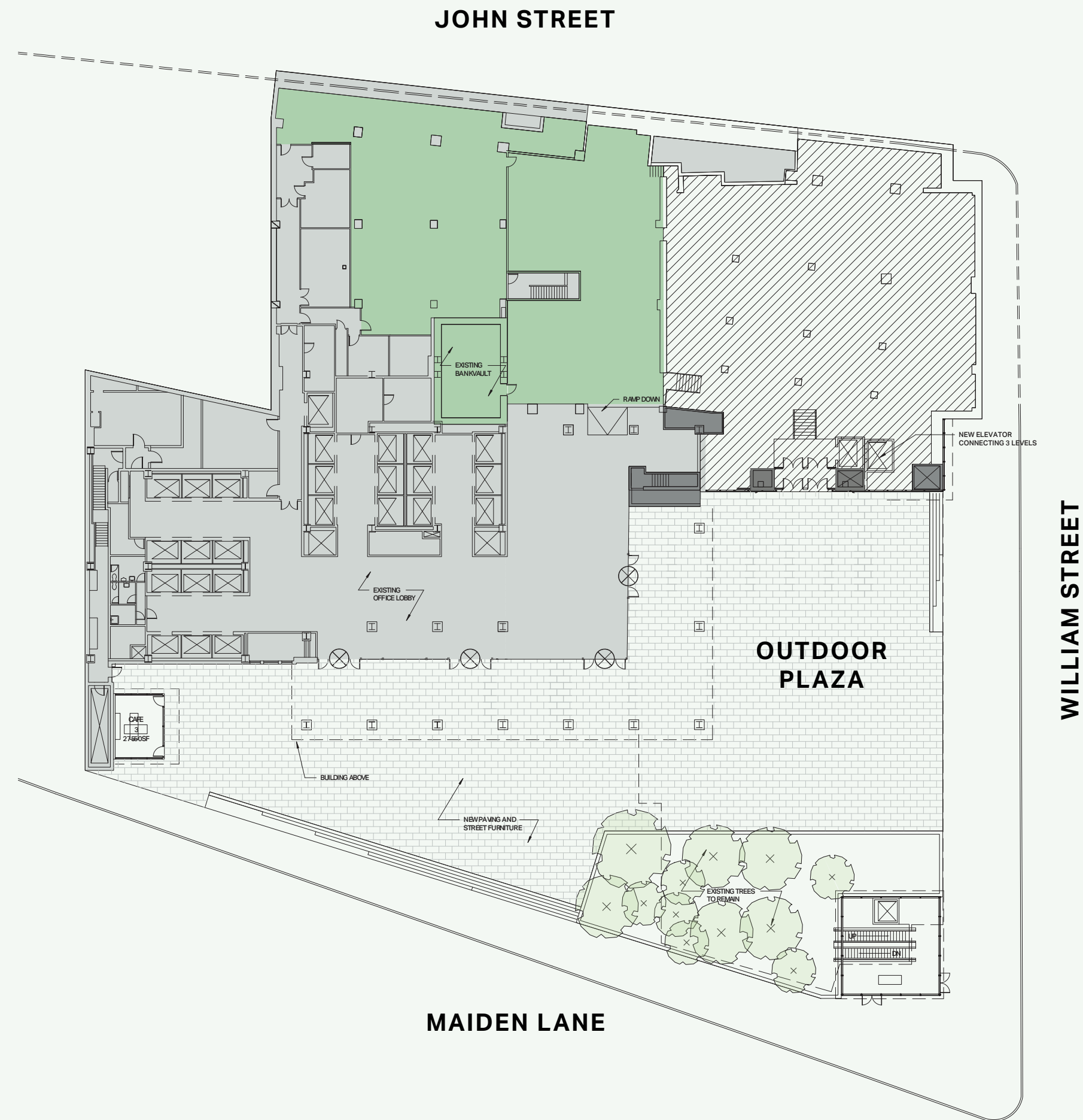


# 101 William

## Plaza Retail

8,490 SF

Ceiling Height: 11'



[Back to master plan](#) →

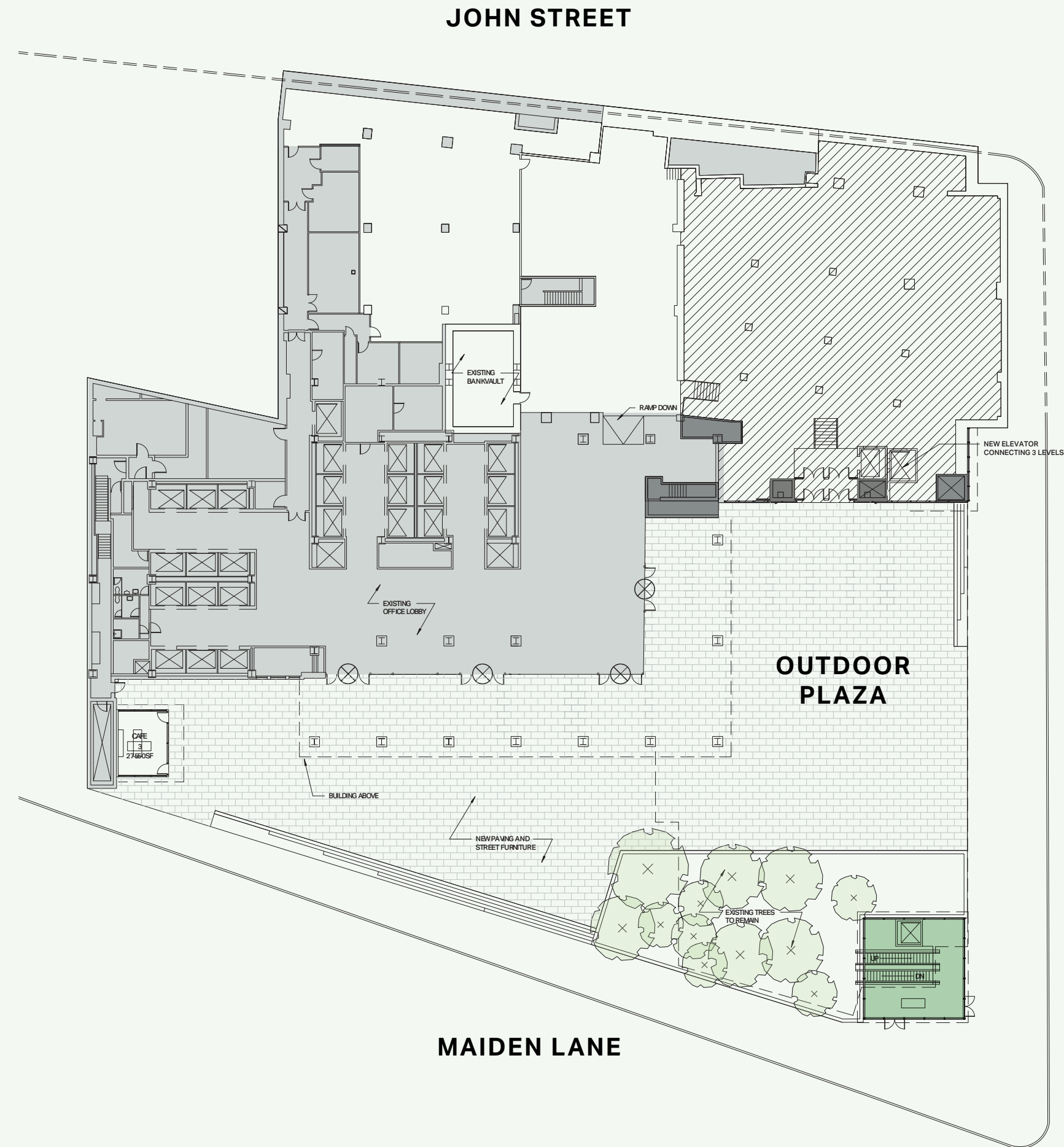


# 59 Maiden

## Sub-Lower Plaza Entrance

570 SF

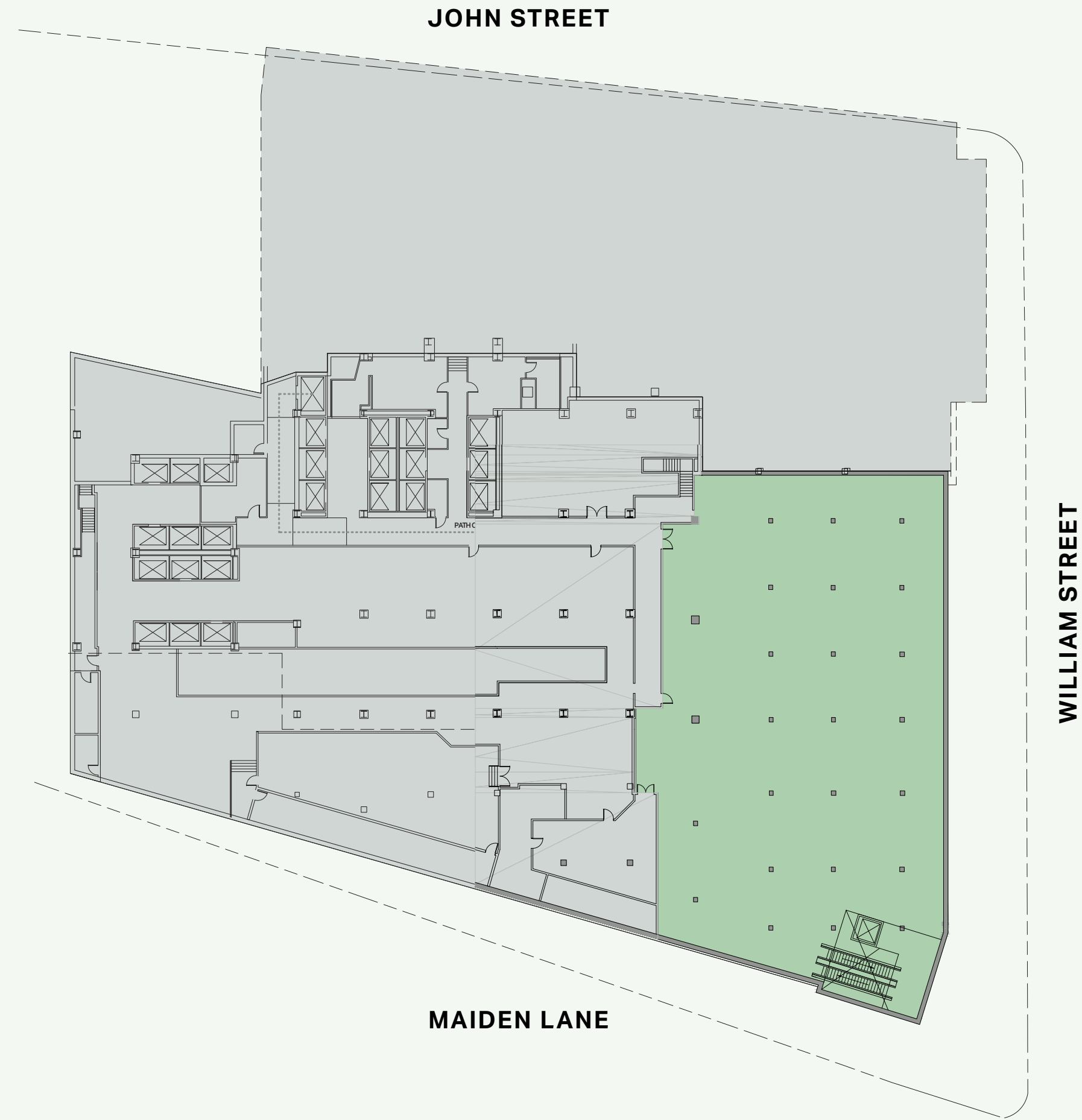
Ceiling Height: 14.5'



## Sub-Lower Retail

12,887 SF

Ceiling Height: 14.5'



[Back to master plan](#) →

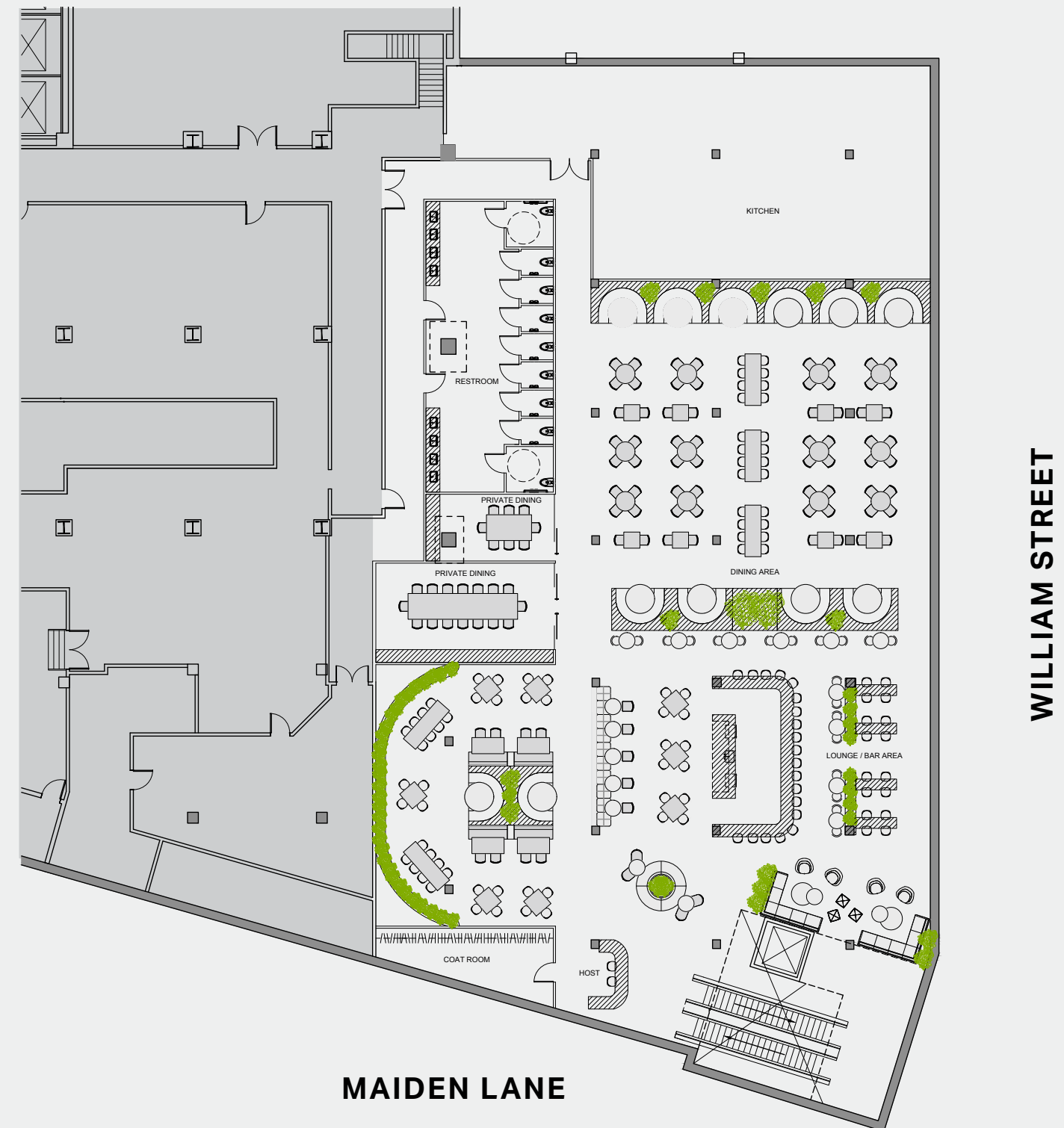


# 59 Maiden Test-Fit Restaurant

## Sub-Lower Retail 12,887 SF

Ceiling Height: 14.5'

RESTAURANT	SEATS
HOST	2
DINING ROOM	124
PRIVATE DINING ROOM 3	48
BAR/LOUNGE SEATING	155
UNISEX RESTROOM	11



[Back to master plan](#) →



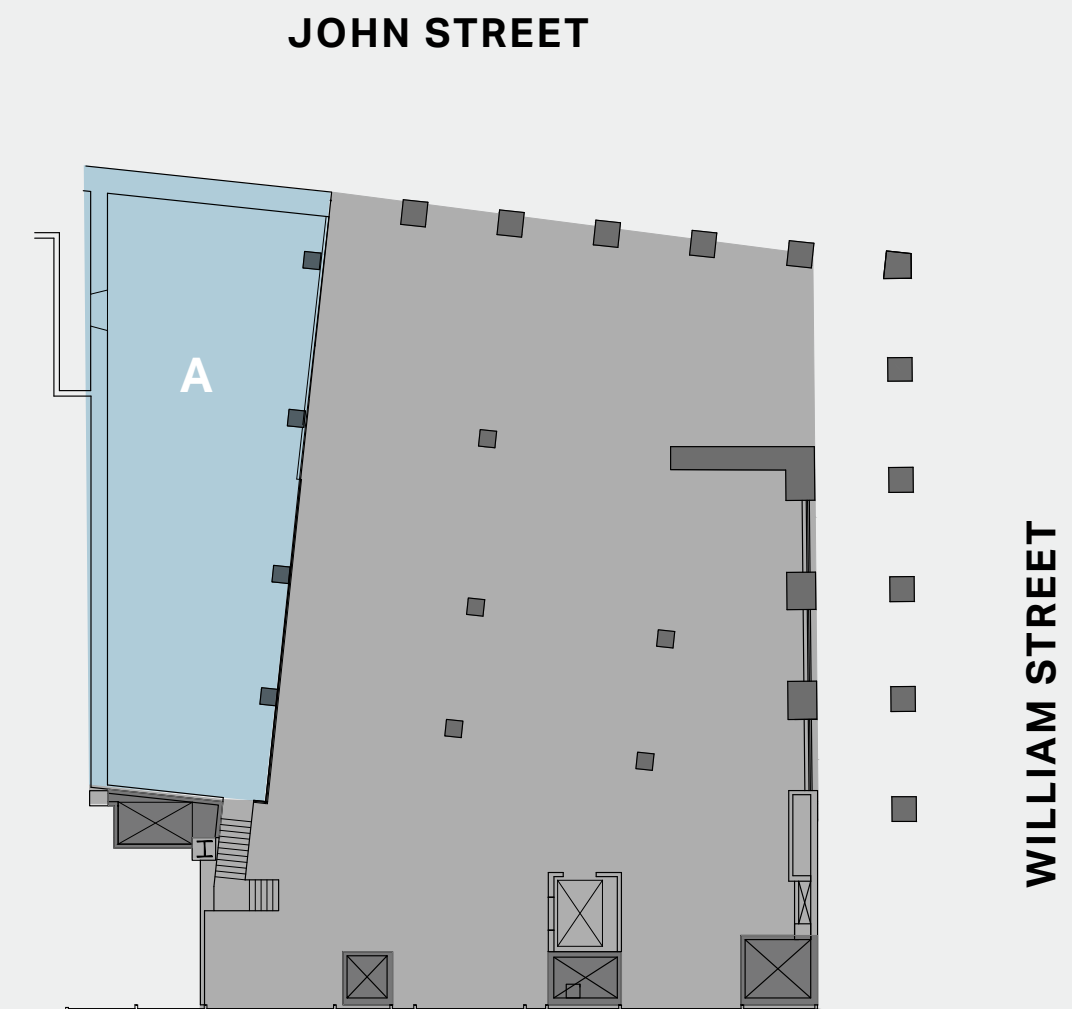
# 101 William Division Scenarios

**Ground Floor** C: 1,171 SF  
A: 2,630 SF D: 1,516 SF  
B: 1,460 SF E: 610 SF

Ceiling Height: 20.5'

**Mezzanine**  
A: 1,628 SF

Ceiling Height: 10'





# 101 William Division Scenarios

## Lower Level

A: 2,615 SF

C: 611 SF

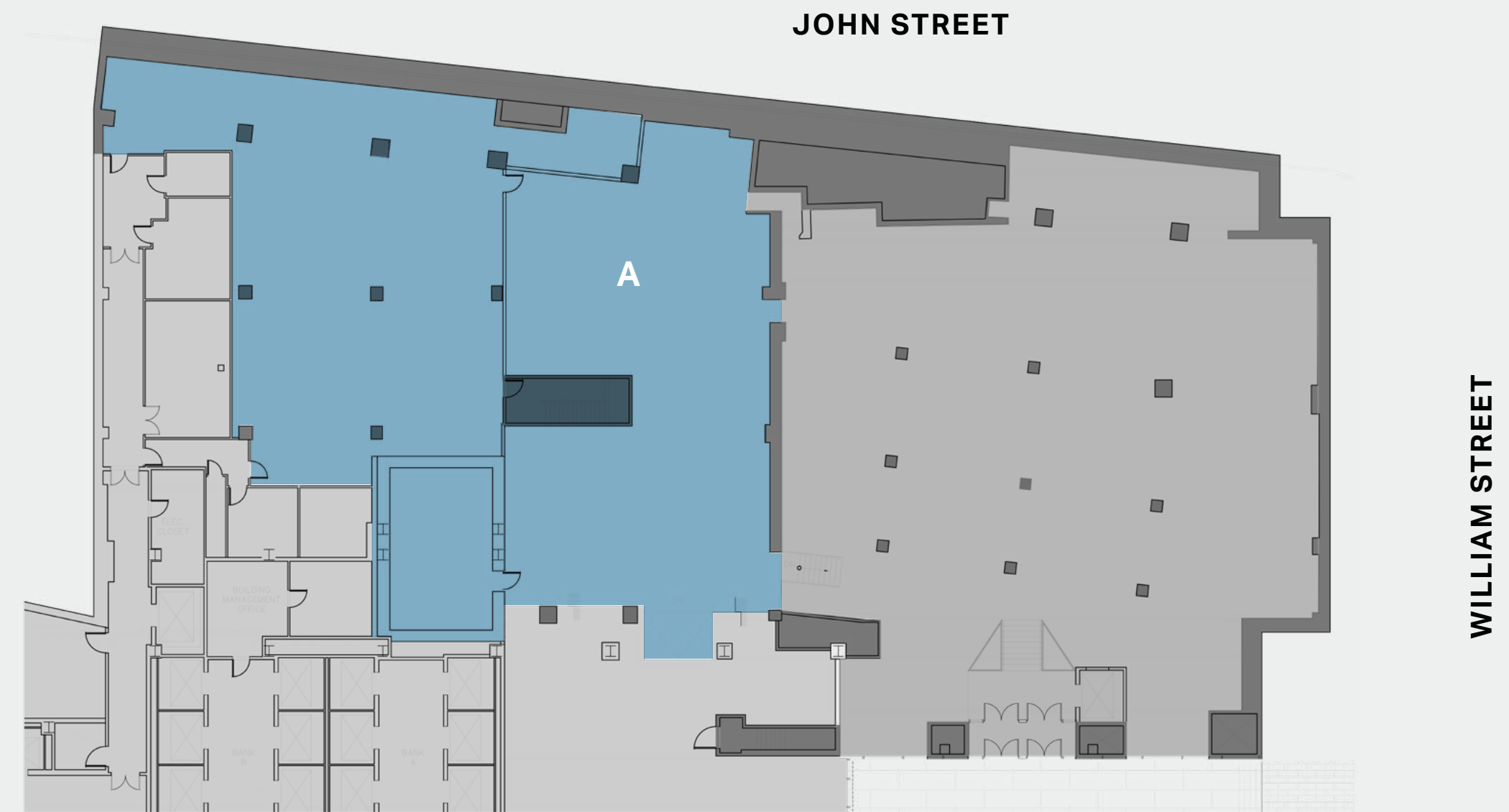
B: 2,987 SF

D: 3,476 SF

Ceiling Height: 12'

## Plaza A:

8,490 SF





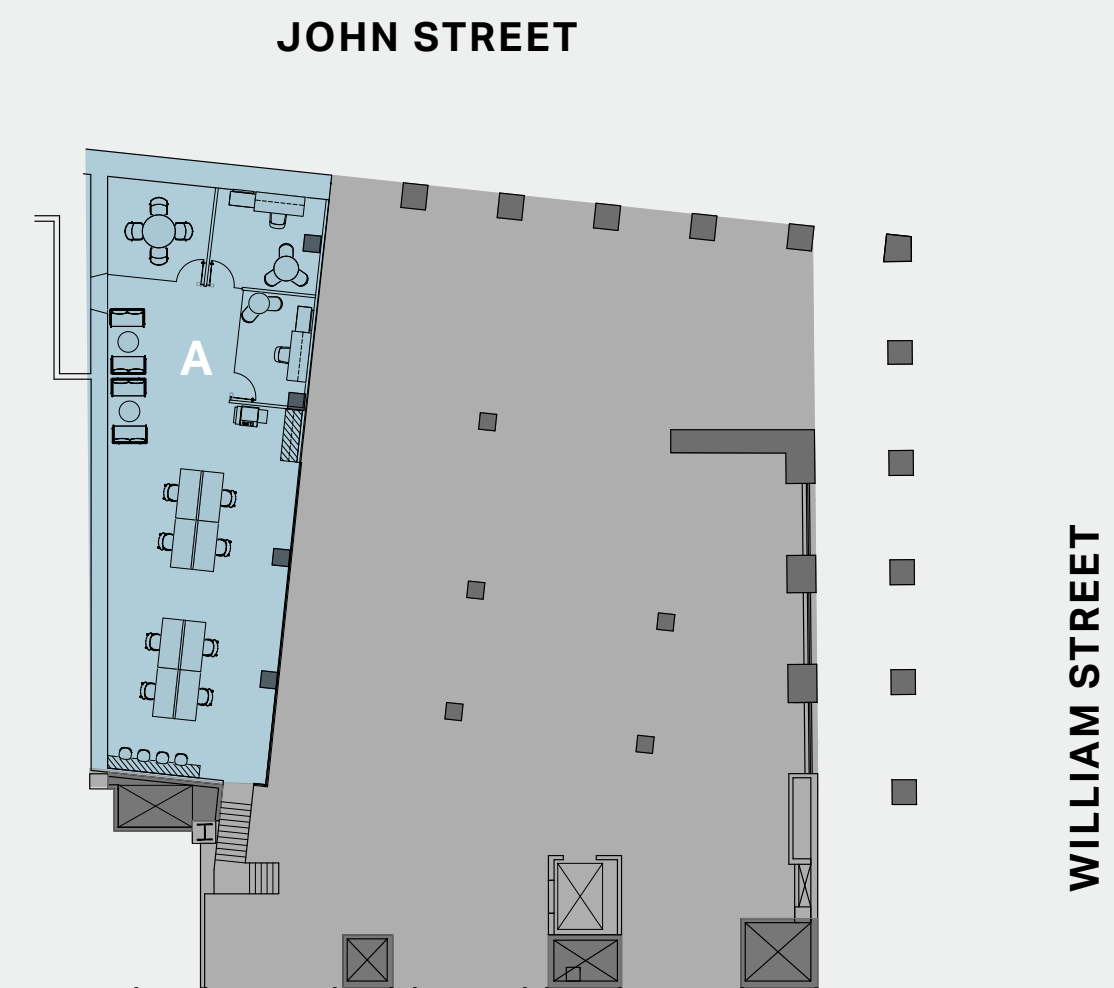
# Test-Fit Division Scenarios

**Ground Floor** C: 1,171 SF  
A: 2,630 SF D: 1,516 SF  
B: 1,460 SF E: 610 SF

Ceiling Height: 20.5'

**Mezzanine**  
A: 1,628 SF

Ceiling Height: 10'





# Test-Fit Division Scenarios

## Lower Level

A: 2,615 SF

C: 611 SF

B: 2,987 SF

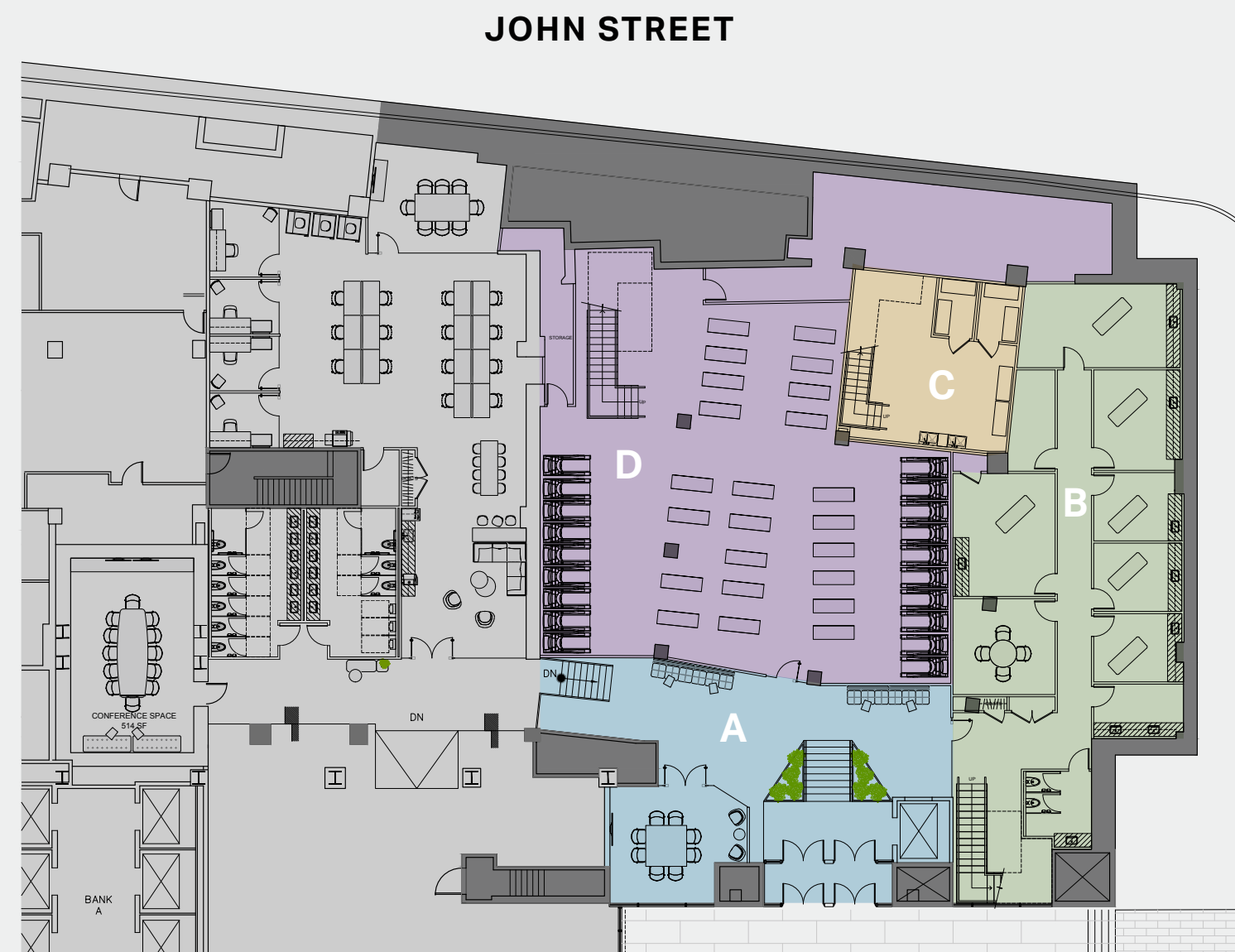
D: 3,476 SF

-----  
Ceiling Height: 12'

## Plaza A:

8,490 SF

-----  
Ceiling Height: 12'





# 101 William Test-Fit Restaurant

## Ground Floor 7,504 SF

Ceiling Height: 20.5'

MEZZANINE	SEATS
HOST	2
DINING ROOM	136
BAR SEATING	46
CAFE SEATING	15

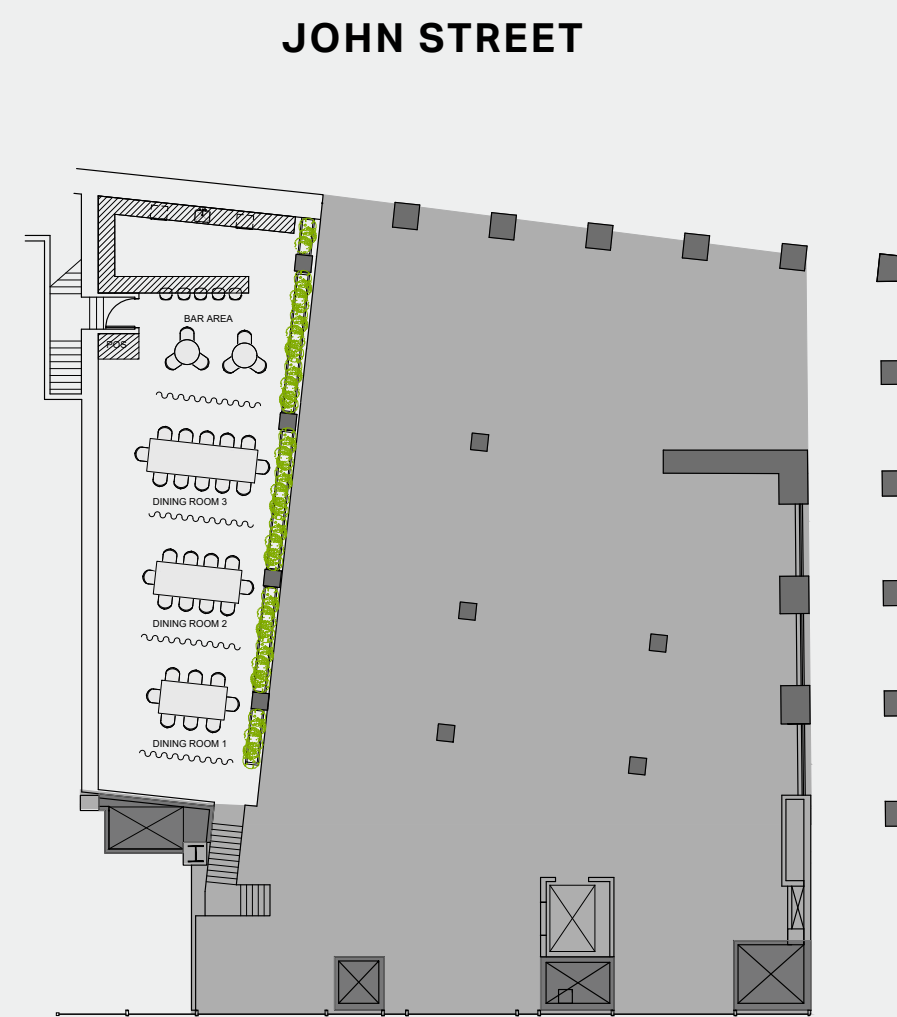


MAIDEN LANE

## Mezzanine 1,628 SF

Ceiling Height: 10'

MEZZANINE	SEATS
PRIVATE DINING ROOM 1	8
PRIVATE DINING ROOM 2	10
PRIVATE DINING ROOM 3	12
BAR AREA	11



MAIDEN LANE

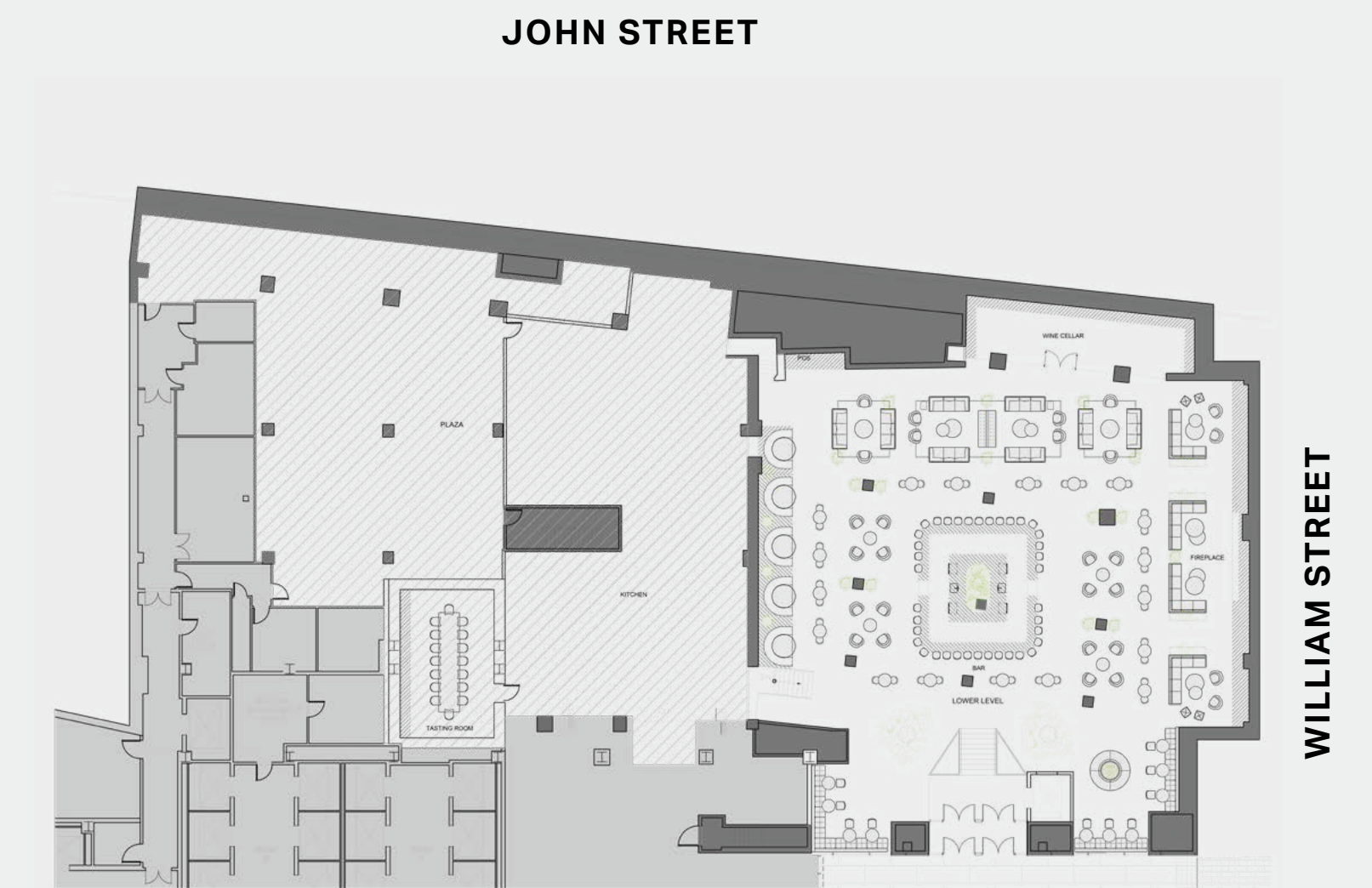
## Lower Level + Plaza Retail

Lower Level: 8,585 SF

Plaza: 8,490 SF

Ceiling Height: 12'

BASEMENT	SEATS
BAR SEATING	186
TASTING ROOM	16
WINE CELLAR	
KITCHEN	
WOMEN'S RESTROOM	6
MEN'S RESTROOM	6



MAIDEN LANE

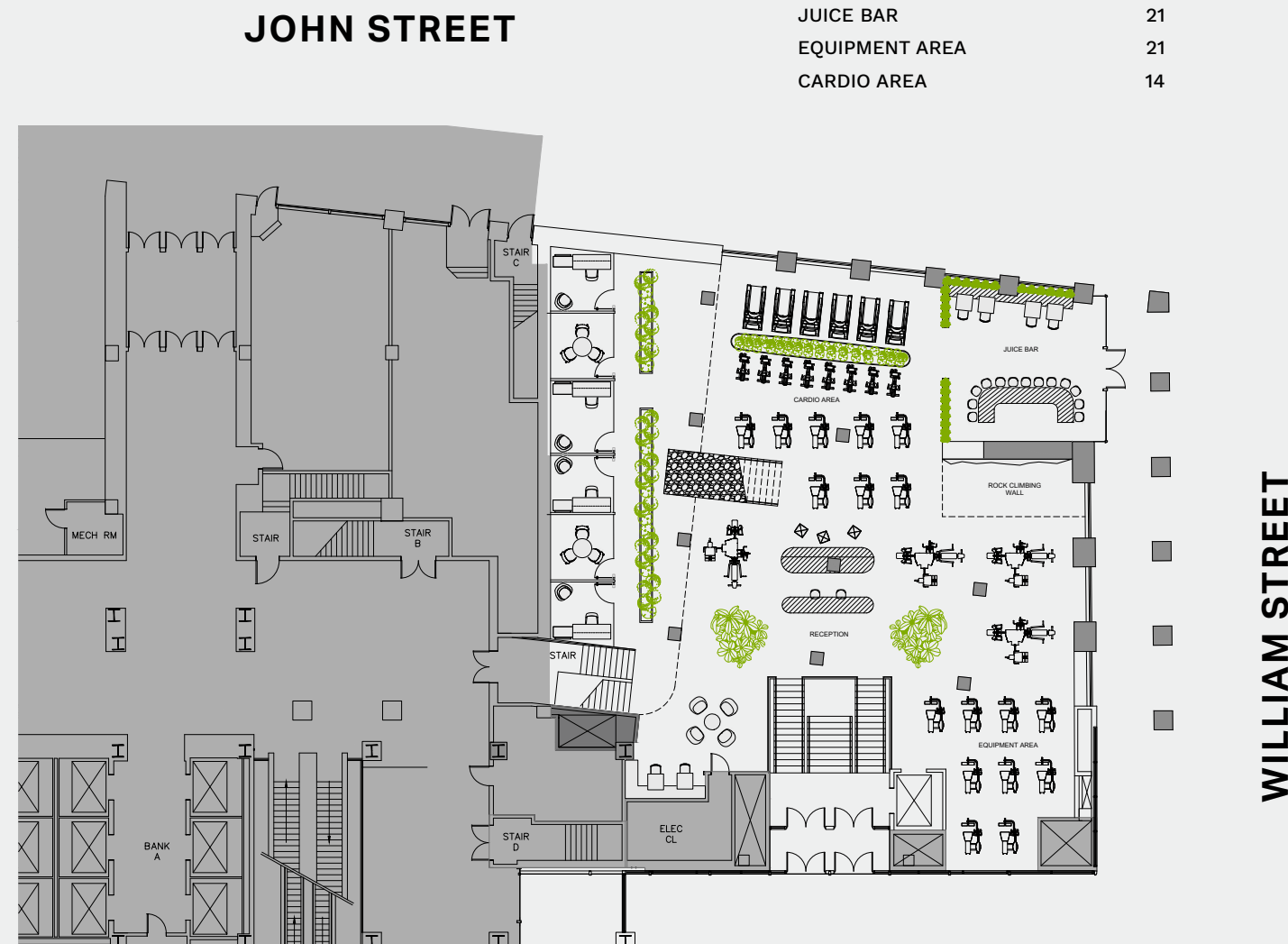


# 101 William Test-Fit Fitness

## Ground Floor 7,504 SF

Ceiling Height: 20.5'

WORKSPACE	SEATS	QNTY
PRIVATE OFFICE	4	4
RECEPTION	2	1
TOTAL HEADCOUNT	6	5
COLLAB SPACE	SEATS	QNTY
MEETING ROOM	6	2
OPEN LOUNGE	13	4
TOTAL COLLAB	19	6
AMENITIES	SEATS	QNTY
JUICE BAR	21	1
EQUIPMENT AREA	21	1
CARDIO AREA	14	1

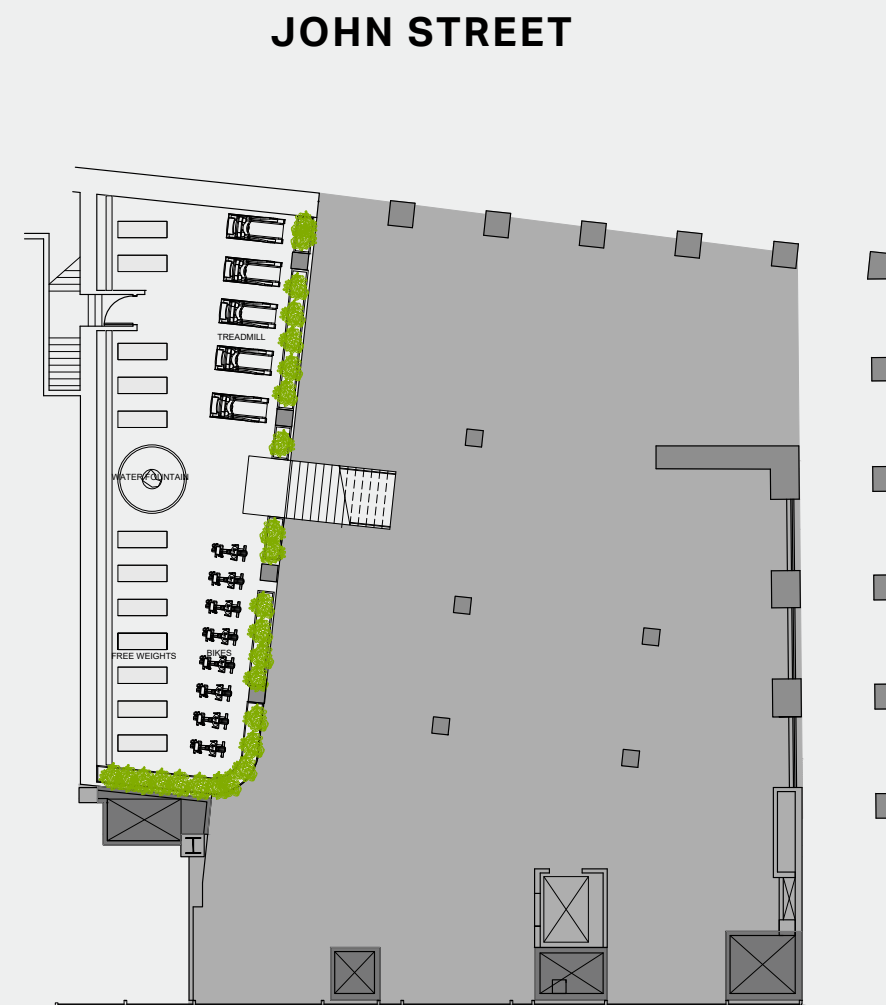


MAIDEN LANE

## Mezzanine 1,628 SF

Ceiling Height: 10'

AMENITIES	SEATS	QNTY
CARDIO AREA	13	1
FREE WEIGHTS AREA	12	1



MAIDEN LANE

## Lower Level + Plaza Retail

Lower Level: 8,585 SF

Plaza: 8,490 SF

Ceiling Height: 12'

AMENITIES	SEATS	QNTY
PRIVATE TRAINING		1
YOGA STUDIO		1
LOUNGE	22	1
BOXING STUDIO		1
SUPPORT	SEATS	QNTY
SPECIALTY WELLNESS/ MEDITATION ROOM		1
WOMEN'S LOCKER ROOM		1
MEN'S LOCKER ROOM		1
STORAGE		1
MESSAGE ROOM	3	3
TREATMENT ROOM		1

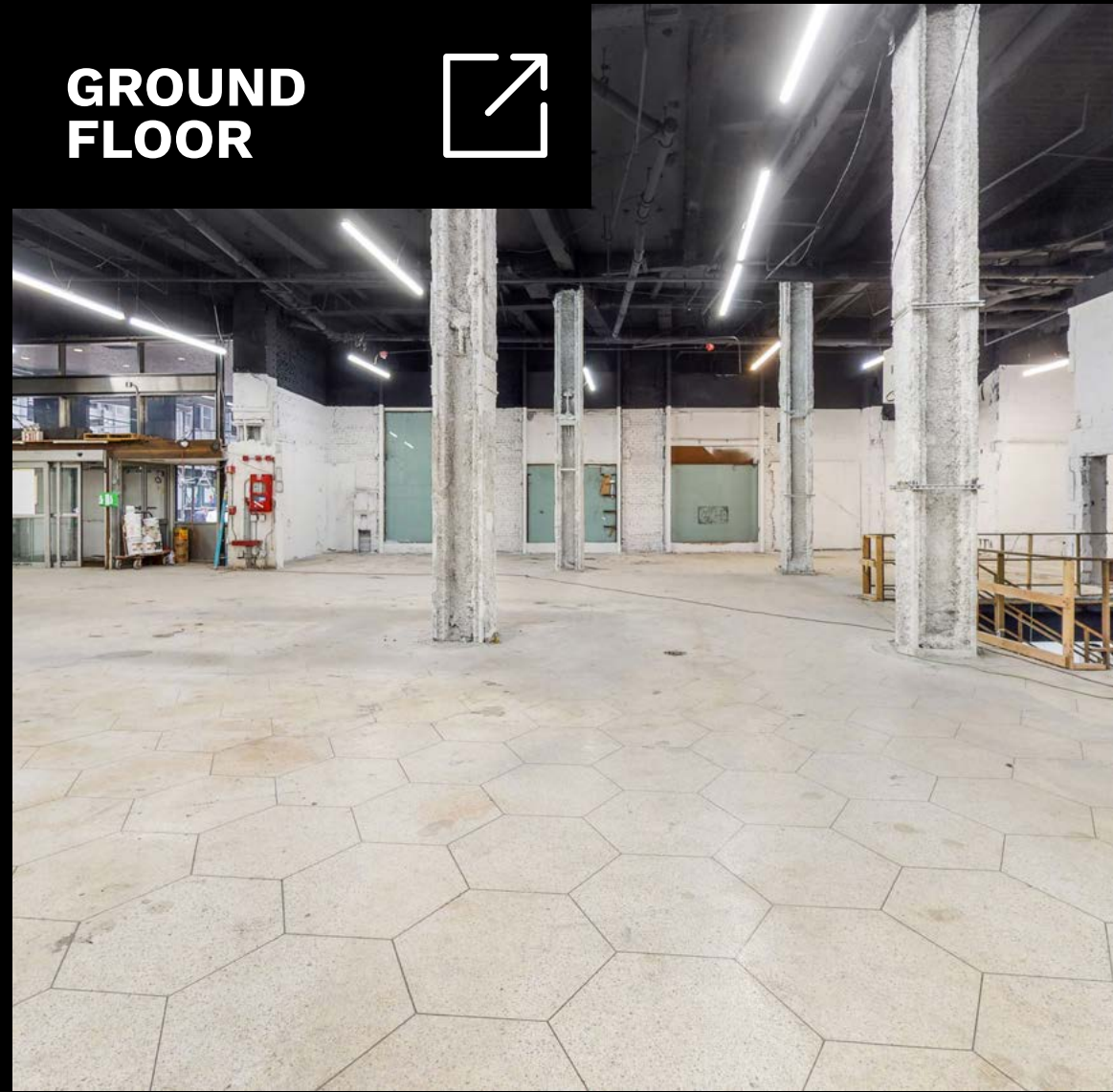


MAIDEN LANE



# Take a Virtual Tour

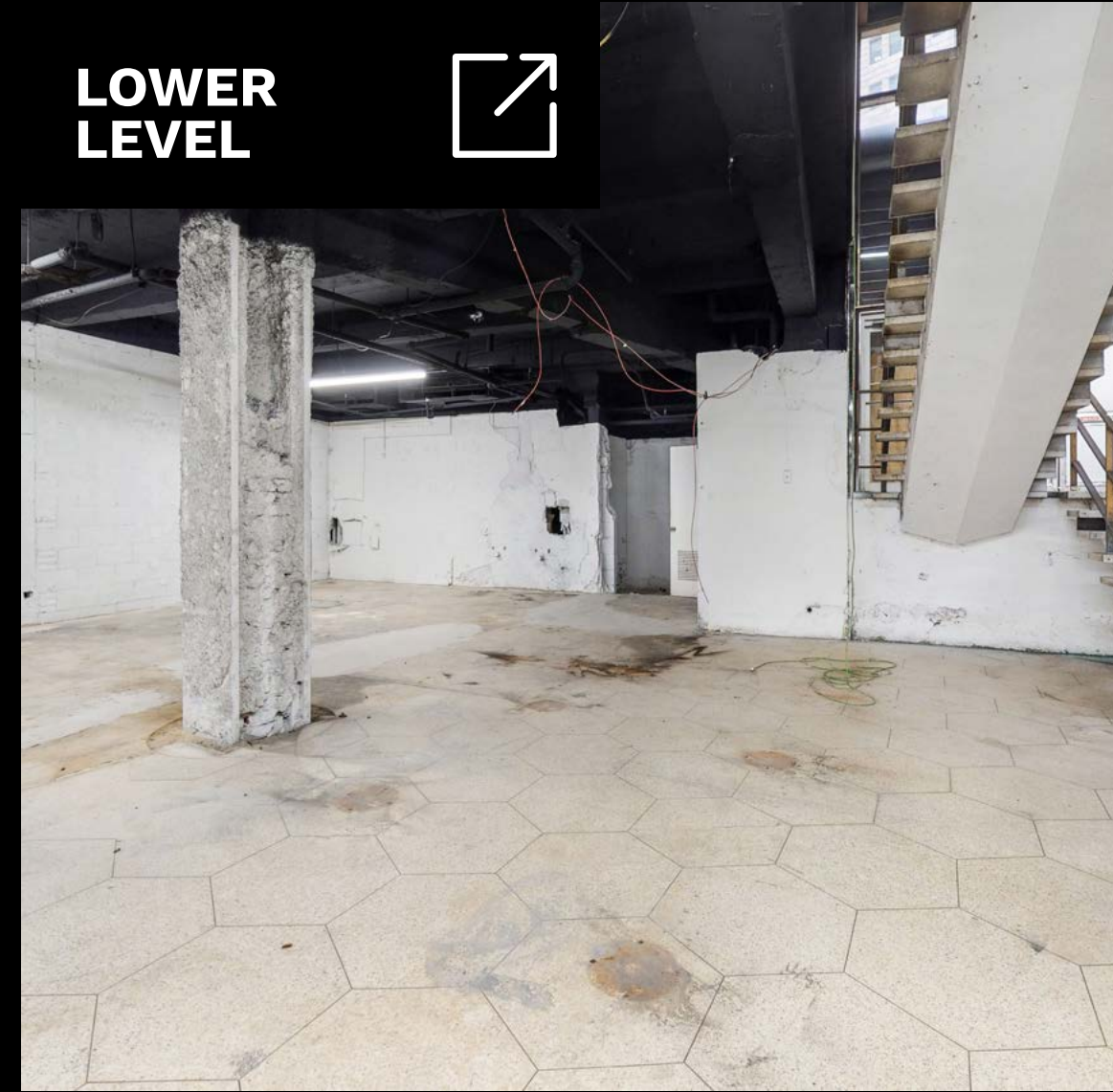
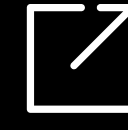
**GROUND FLOOR**



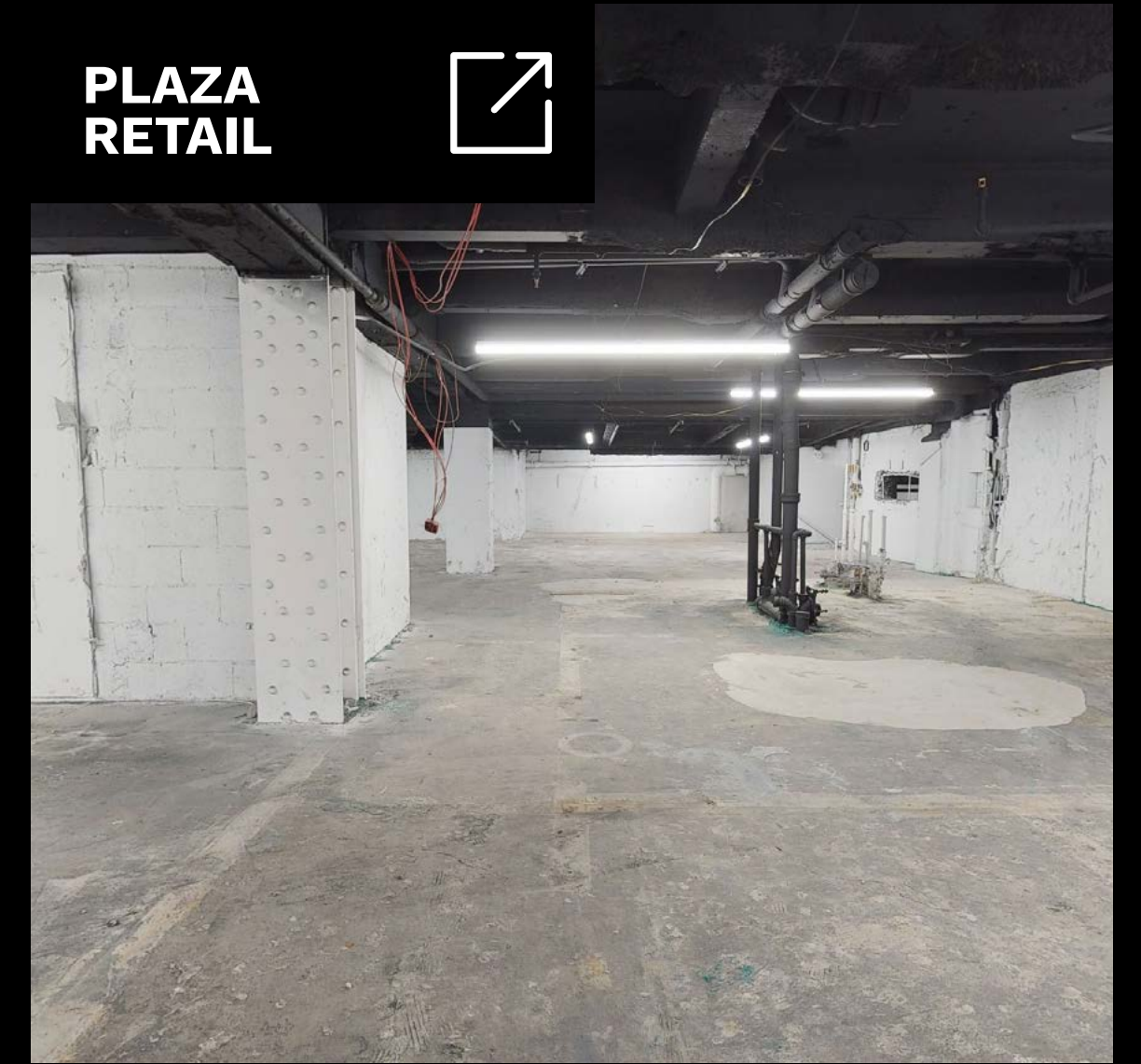
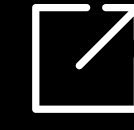
**MEZZANINE**



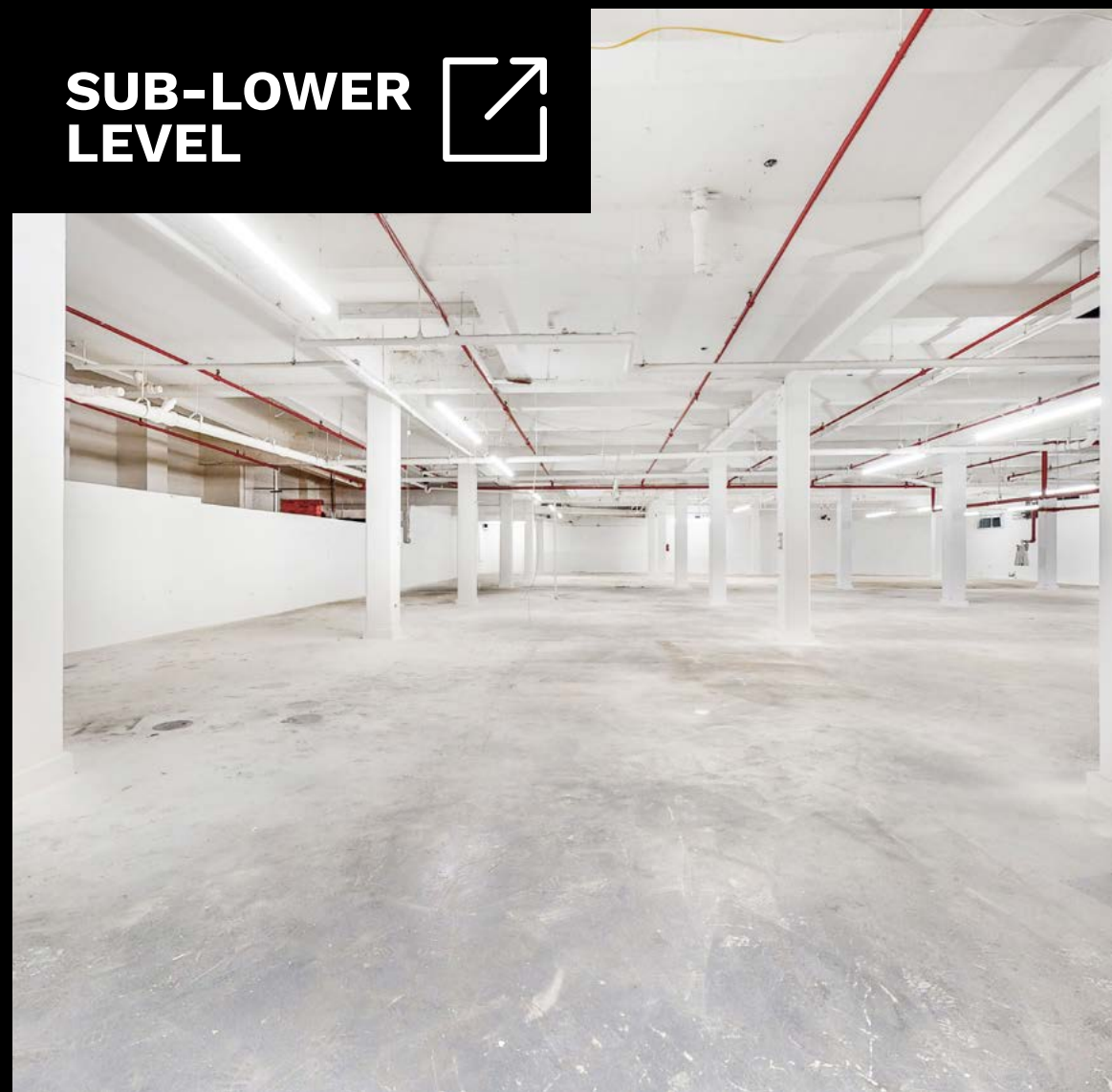
**LOWER LEVEL**



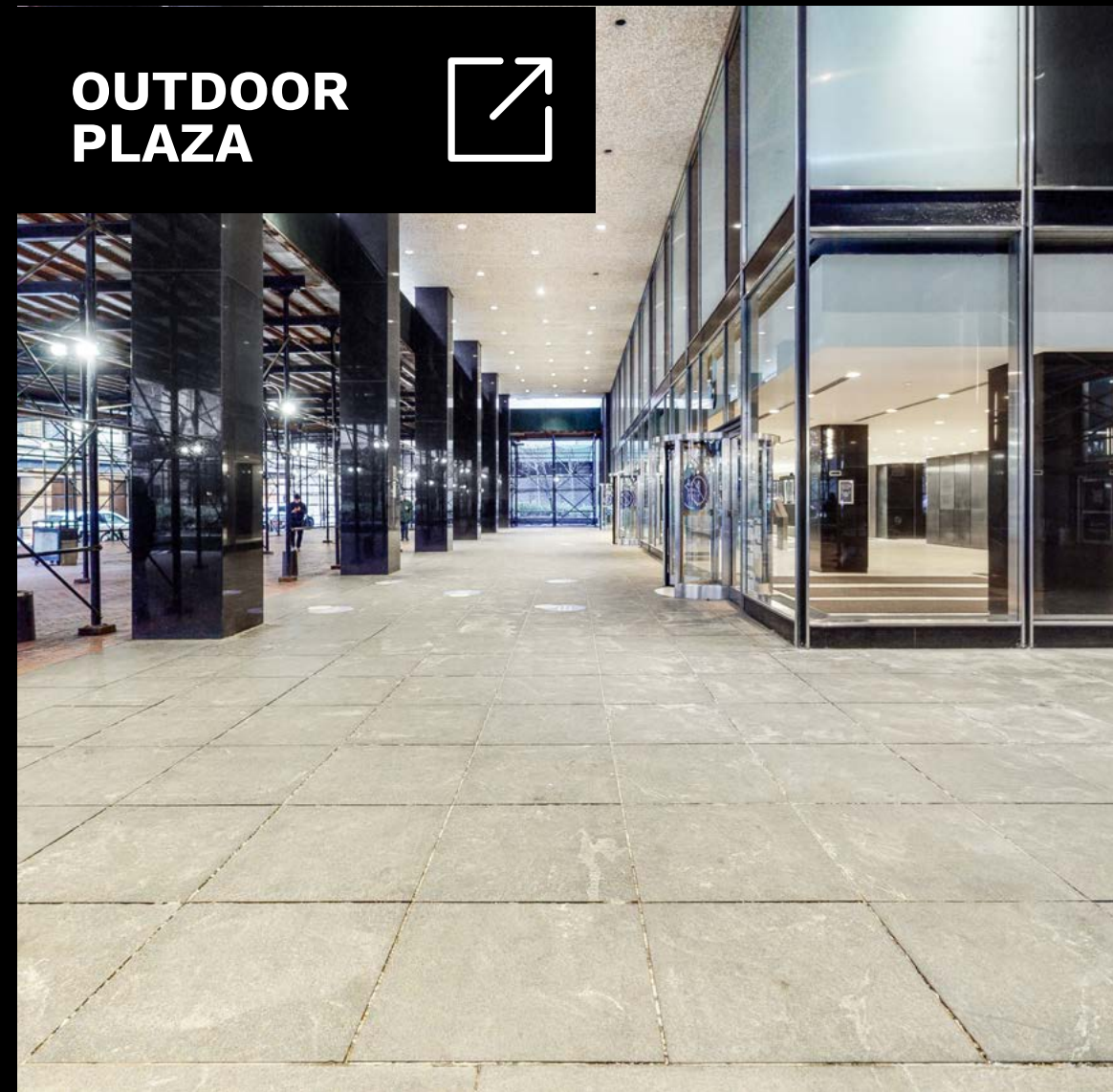
**PLAZA RETAIL**



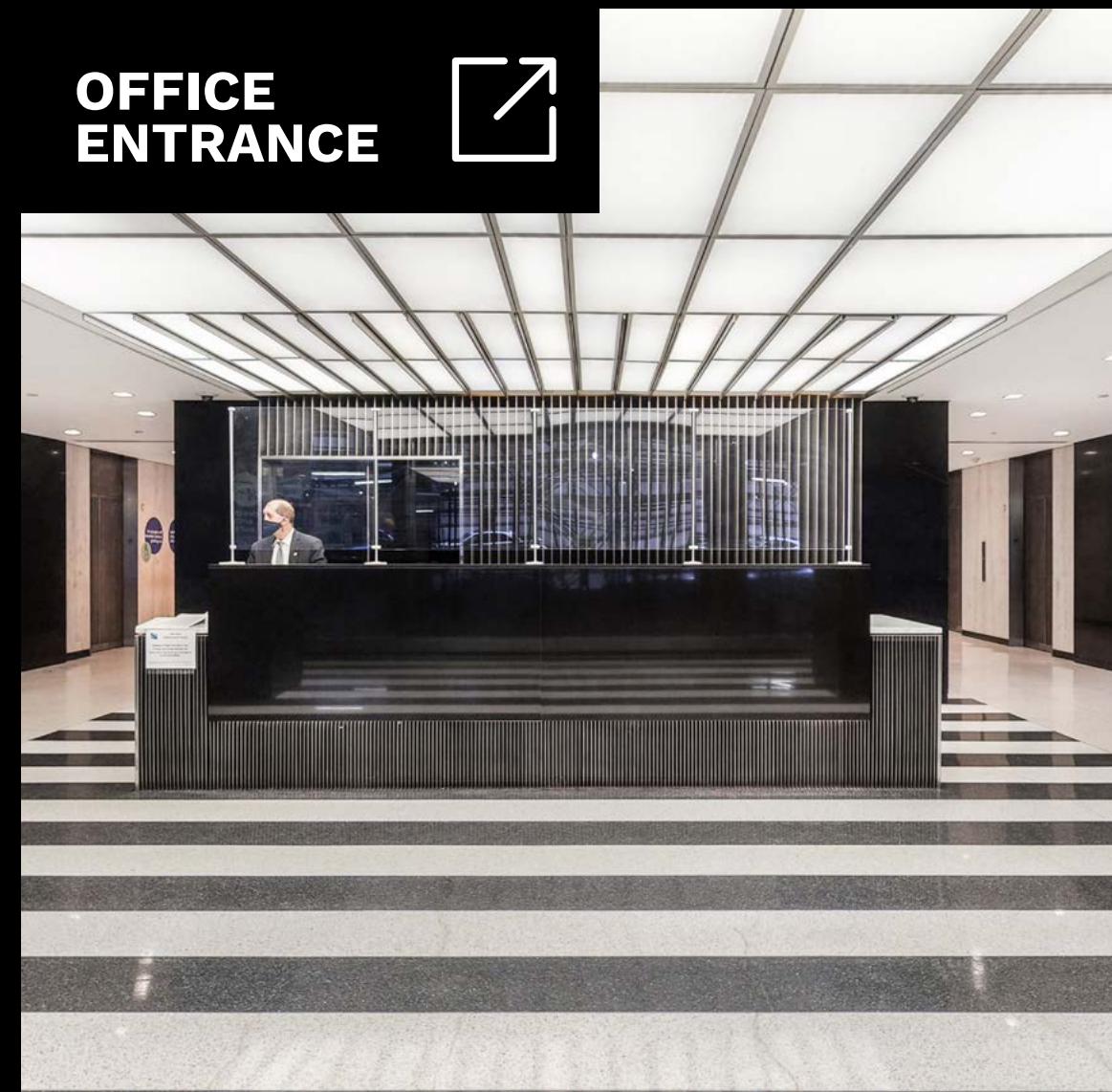
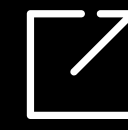
**SUB-LOWER LEVEL**



**OUTDOOR PLAZA**



**OFFICE ENTRANCE**



**LOADING DOCK**





# The Neighborhood





42 MILLION

Total Area  
Ridership

14.2 MILLION

Annual  
Tourists

88 MILLION

Square Feet  
of Office Space

\$8.4 BILLION

Annual  
Spending Power

6,100+

Hotel  
Rooms

\$1.4 MILLION

Median  
Home Value

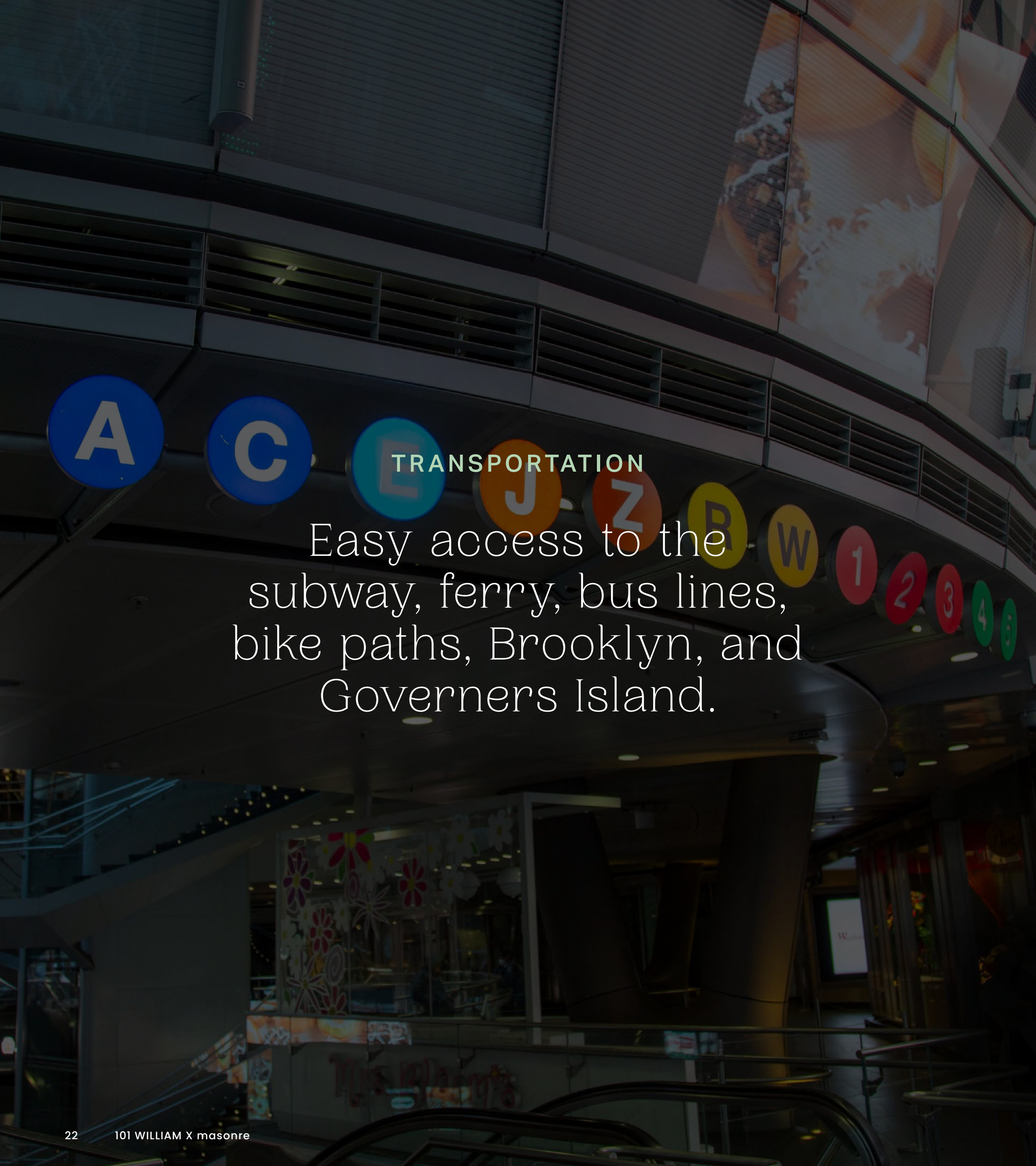
33.9

Median  
Age

323,000

Area  
Employees





A

C

E

J

Z

R

W

1

2

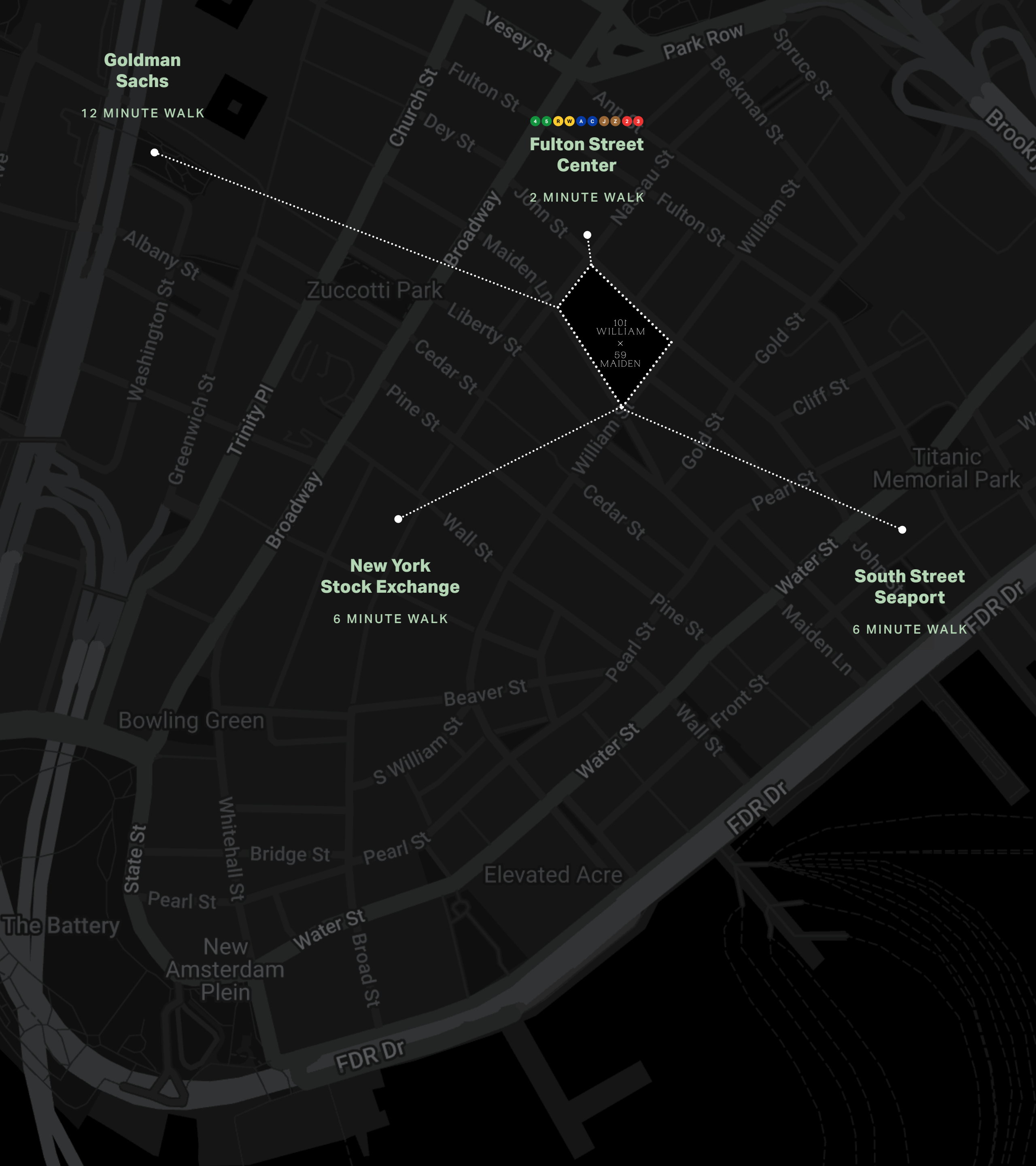
3

4

5

### TRANSPORTATION

Easy access to the subway, ferry, bus lines, bike paths, Brooklyn, and Governors Island.



Goldman Sachs

12 MINUTE WALK

Fulton Street Center

2 MINUTE WALK

New York Stock Exchange

6 MINUTE WALK

South Street Seaport

6 MINUTE WALK



# Press



**French Retailer Printemps to Open first US Store at One Wall Street**

**THE REAL DEAL**  
SOUTH FLORIDA REAL ESTATE NEWS



**Owner of Zara purchases FiDi rental for \$500M**

**THE REAL DEAL**  
SOUTH FLORIDA REAL ESTATE NEWS



**NYC Office Leasing Heating Up, \$250,000,000 invested at 60 Wall**

**NEW YORK POST**



**Alexander Wang Leases Space**

**COMMERCIAL OBSERVER**



**Jean Georges at the Tin Building**

**Restaurant HOSPITALITY**



**\$850,000,000 Mixed Use Tower Gets Approval**

**6sqft**



**Jay Suites takes space at 40 Wall**

**COMMERCIAL OBSERVER**




**Tennis Facility to 28 Liberty**

**COMMERCIAL OBSERVER**



**15,000 SF Food Hall Opens in Fidi**

**TimeOut**



**New Immersive Exhibit coming to 49 Chambers St**

**TimeOut**



# Recent Residential Developments



## 130 William

- 242 Luxury Residential Units
- Studios to 4 Bedrooms priced between \$895,000 - \$20,000,000
- High end new development in the Fulton/Seaport area of the Financial District
- Ranked by the Real Deal as one of the top selling new developments in 2021, with 81 signed contracts totaling \$218,202,658 in Sales volume

## 1 Wall Street

- 566 Residential Units, anchored by Whole Foods and Lifetime Fitness
- Studios to 5+ Bedrooms priced between \$990,000 - \$20,000,000 (there are plans for a massive penthouse which could ask upwards of \$40,000,000 + although very little info has been released)
- Largest office to condominium conversion in NYC history - 1.2 Million Square Feet

## 25 Park Row

- 110 Luxury Residential units
- 1 to 5 Bedrooms with prices ranging from approx. \$2,000,000-\$25,000,000
- Record Setting (FiDi) \$25,000,000 duplex PH entered into Contract in Nov, 2021.
- 53,000 sqft of available retail space

## 8 Spruce Street

- 899 Unit Luxury Rental Building
- Studios to 4 Bedrooms with prices ranging from approx. \$4,000/month to upwards of \$25,000/month
- 94% Occupancy
- Elementary/Middle School taking up the first 5 floors of the building
- Blackstone recently acquired the building for \$930,000,000

## 19 Dutch Street

- 483 Unit Luxury Rental Building
- Studios to 2 Bedrooms with prices ranging from approx. \$3,500/month-\$12,000/month
- 98% Occupancy
- Amancio Ortega's Pontegadea recently acquired the building for \$500,000,000

## 20 Broad Street

- 533 Unit Luxury Rental Building
- Studios to 2 Bedrooms + Home Offices with prices ranging from approx. \$2,500/month-\$9,500/month
- Office to Residential conversion project
- 90,000 square feet of retail space



# Contact Exclusive Agents

## masonre

masonre is a real estate brokerage and advisory firm with a strong history of leading the growth of trophy retail assets and brands in New York City, Miami, and Los Angeles.

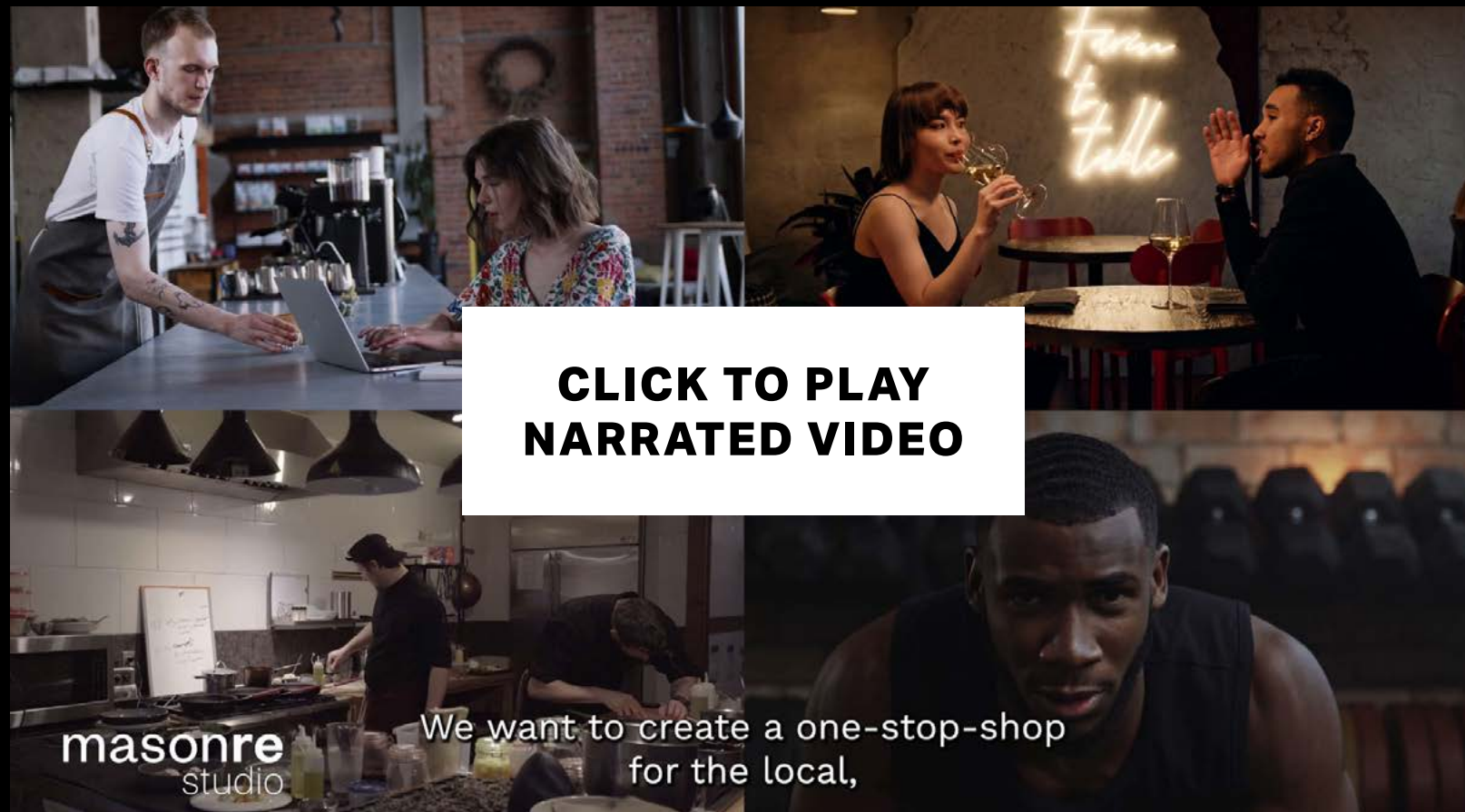
masonre.com

**David Abrams**  
david@masonre.com  
212.222.1496

**Eliot Goldschmidt**  
eliot@masonre.com  
917.902.8039

**Jeff Jacobson**  
jeff@masonre.com  
516.581.3325

**Brandon Miller**  
brandonalden.miller@nmrk.com  
917.513.7933



**CLICK TO PLAY  
NARRATED VIDEO**

**masonre** studio We want to create a one-stop-shop for the local,

© 2022 MASONRE All information supplied is from sources deemed reliable and is furnished subject to errors, omissions, modifications, removal of the listing for sale or lease, and to any listing conditions, including the rates and manner of payment of commissions for particular offerings imposed by principals or agreed by masonre, the terms of which are available to principals or duly licensed brokers. Any square footage dimensions set forth are approximate.

