

# 980 AVENUE OF THE AMERICAS



HERALD SQUARE X BRYANT PARK

CONCEPTUAL RENDERING

# A Full Retail Block

Situated in the highly trafficked passageway between Herald Square and Bryant Park with **over 312,000 pedestrians passing the property weekly**. At the base of a mixed-use tower with 380 residential units, 75,000 SF WeWork office and last remaining retail space.



# Limitless Potential

## Proposed Divisions Ground Floor

870 SF

## Frontage

16.5 FT

## Ceiling Heights

18 FT

## Possession

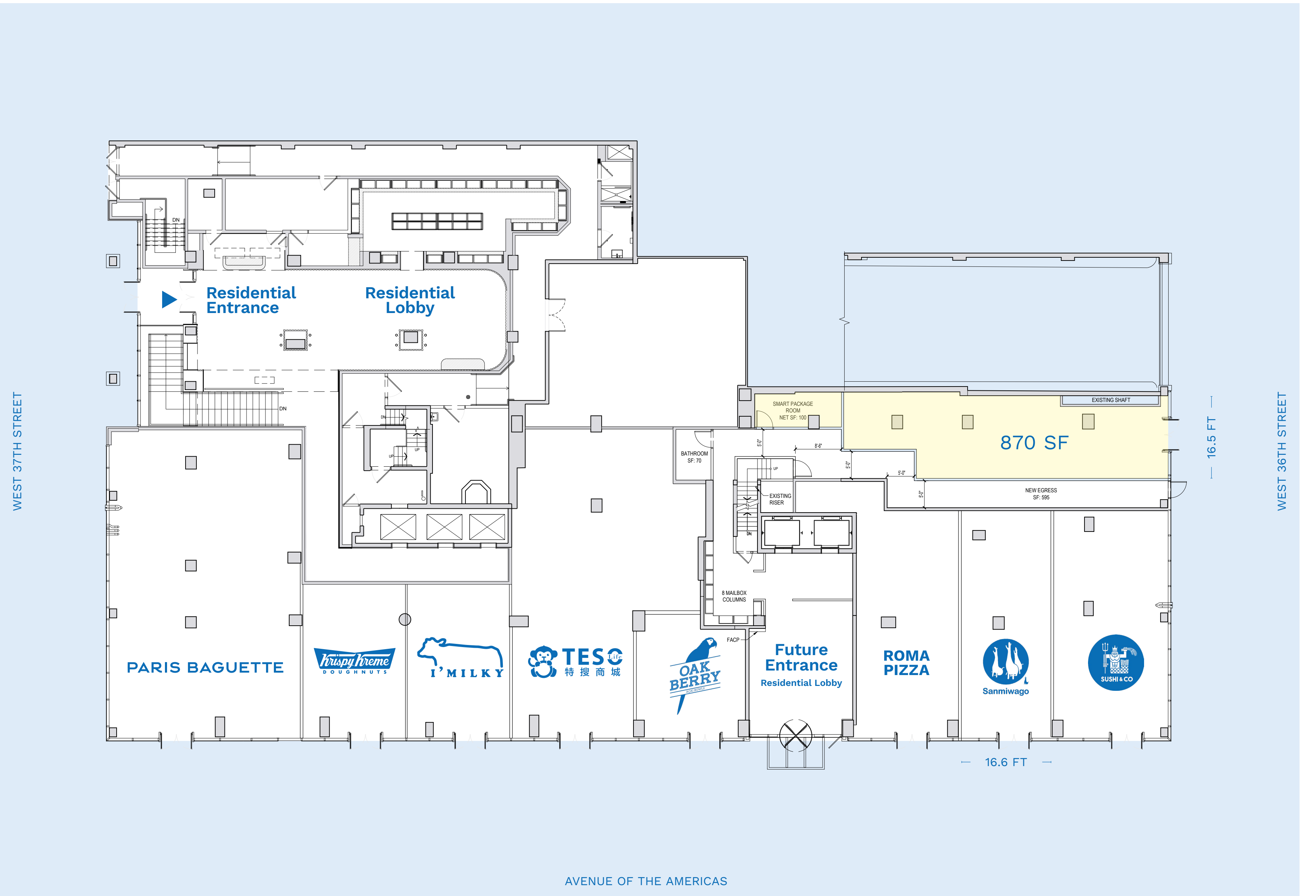
Immediate

## Term

Long-term

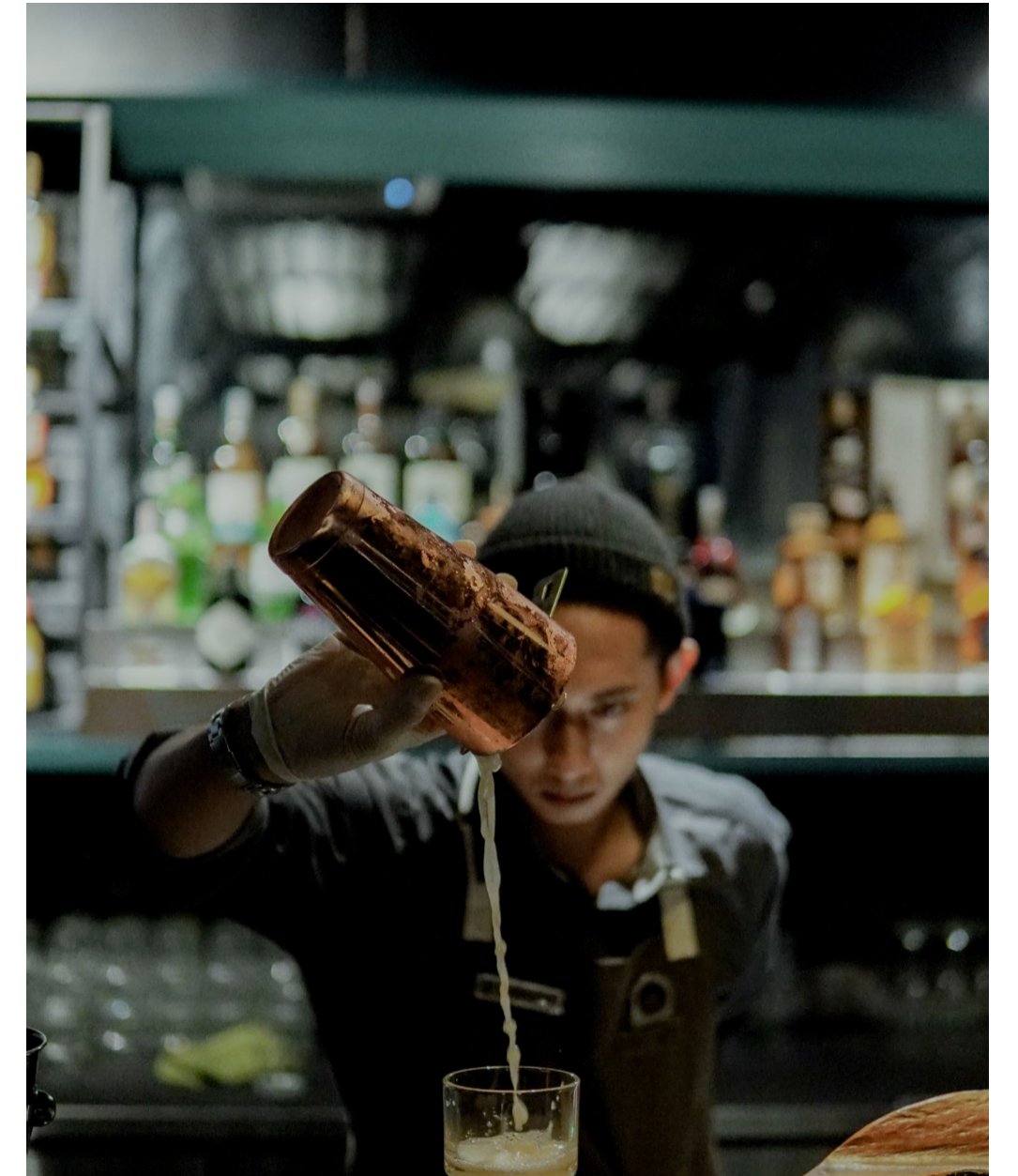
## Features

- Space A can be vented for restaurant
- Space B is fully built out and vented restaurant space
- All uses considered
- In close proximity to the B,D,F,M,N,Q,R,W and 7 subway lines



# Unparalleled Co-tenancy

Own the retail streetscape on one of **Manhattan's busiest corridors**.



## By the Numbers

\$149K

Average Household  
Income within 1/2 mile

501K

Corporate Employees  
within 1/2 mile

39M

Annual Subwayriders at  
Herald Square station

6M

Annual Visitors at  
Bryant Park

56K

Pedestrians Passing the  
Property Daily

30K+

Businesses Within  
1/2 mile

# Contact Exclusive Agents

masonre

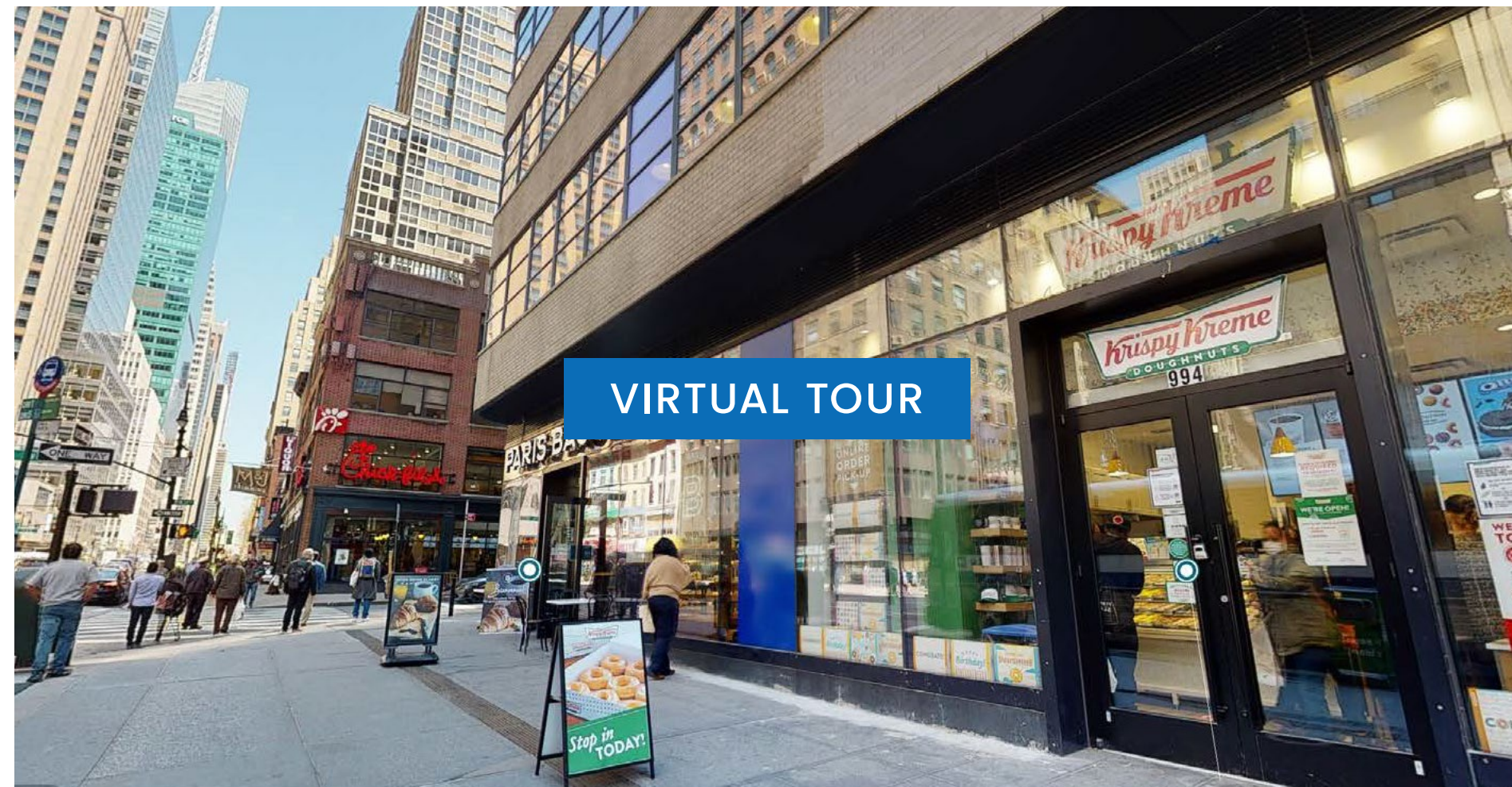
masonre is a real estate brokerage and advisory firm with a strong history of leading the growth of trophy retail assets and brands in New York City, Miami, and Los Angeles.

masonre.com

**David Abrams**  
david@masonre.com  
212.222.1496

**Eliot Goldschmidt**  
eliot@masonre.com  
917.902.8039

**Brandon Miller**  
brandon@masonre.com  
917.513.7933



© 2024 MASONRE. All information supplied is from sources deemed reliable and is furnished subject to errors, omissions, modifications, removal of the listing for sale or lease, and to any listing conditions, including the rates and manner of payment of commissions for particular offerings imposed by principals or agreed by masonre, the terms of which are available to principals or duly licensed brokers. Any square footage dimensions set forth are approximate. All artist's renderings are for conceptual purposes only and subject to variances.