

980 AVENUE OF THE AMERICAS



HERALD SQUARE X BRYANT PARK

CONCEPTUAL RENDERING

A Full Retail Block

Situated in the highly trafficked passageway between Herald Square and Bryant Park with **over 312,000 pedestrians passing the property weekly**. At the base of a mixed-use tower with 380 residential units, 75,000 SF WeWork office and last remaining retail space.



Limitless Potential

Proposed Divisions Ground Floor

870 SF

Frontage

16.5 FT

Ceiling Heights

18 FT

Possession

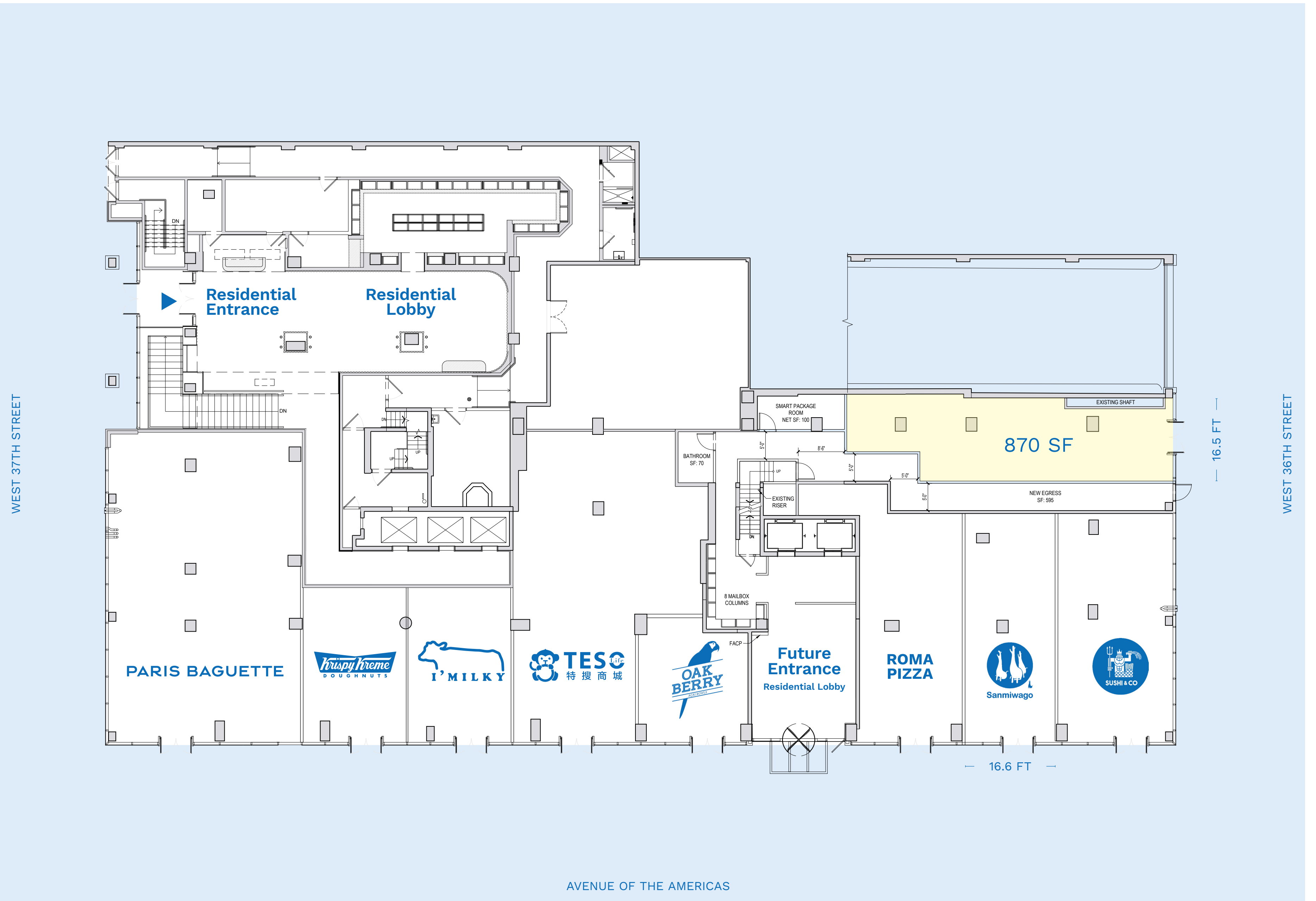
Immediate

Term

Long-term

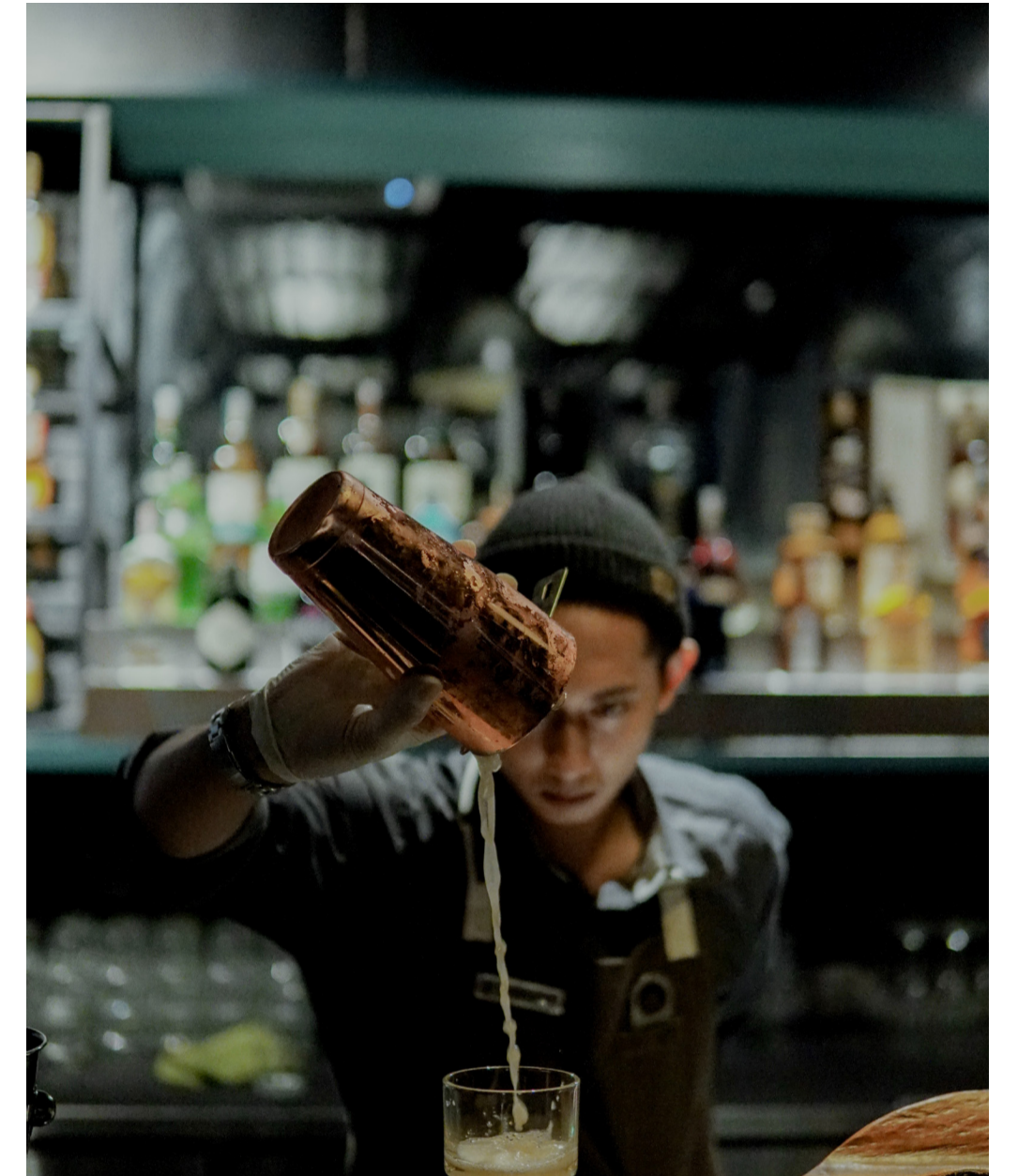
Features

- Space A can be vented for restaurant
- Space B is fully built out and vented restaurant space
- All uses considered
- In close proximity to the B,D,F,M,N,Q,R,W and 7 subway lines



Unparalleled Co-tenancy

Own the retail streetscape on one of **Manhattan's busiest corridors**.



By the Numbers

\$149K

Average Household
Income within 1/2 mile

501K

Corporate Employees
within 1/2 mile

39M

Annual Subwayriders at
Herald Square station

6M

Annual Visitors at
Bryant Park

56K

Pedestrians Passing the
Property Daily

30K+

Businesses Within
1/2 mile

Contact Exclusive Agents

masonre

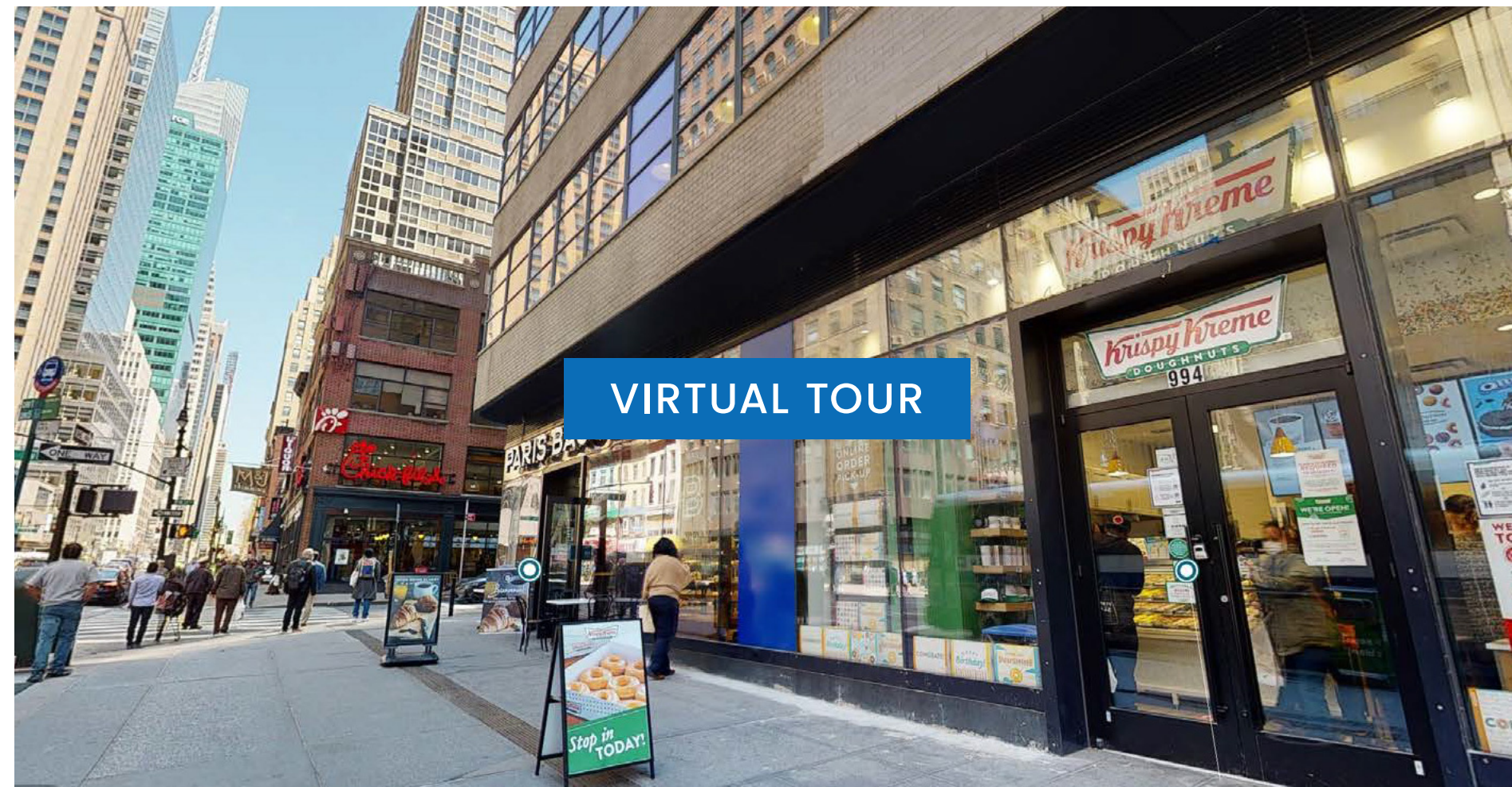
masonre is a real estate brokerage and advisory firm with a strong history of leading the growth of trophy retail assets and brands in New York City, Miami, and Los Angeles.

masonre.com

David Abrams
david@masonre.com
212.222.1496

Eliot Goldschmidt
eliot@masonre.com
917.902.8039

Brandon Miller
brandon@masonre.com
917.513.7933



© 2024 MASONRE. All information supplied is from sources deemed reliable and is furnished subject to errors, omissions, modifications, removal of the listing for sale or lease, and to any listing conditions, including the rates and manner of payment of commissions for particular offerings imposed by principals or agreed by masonre, the terms of which are available to principals or duly licensed brokers. Any square footage dimensions set forth are approximate. All artist's renderings are for conceptual purposes only and subject to variances.