

229 NINTH AVENUE

CHELSEA, NYC

masonre



Space Details

APPROXIMATE SIZE

SPACE A

Ground: 1,100 SF Ground
Lower Level: 600 SF (can be made contiguous)
Frontage: 26’ Wraparound

LOCATION

Northwest Corner of 9th Avenue and 24th Street

CEILING HEIGHTS

Ground: 14 FT
Lower Level: 9 FT

TERM

Long Term

POSSESSION

Immediate

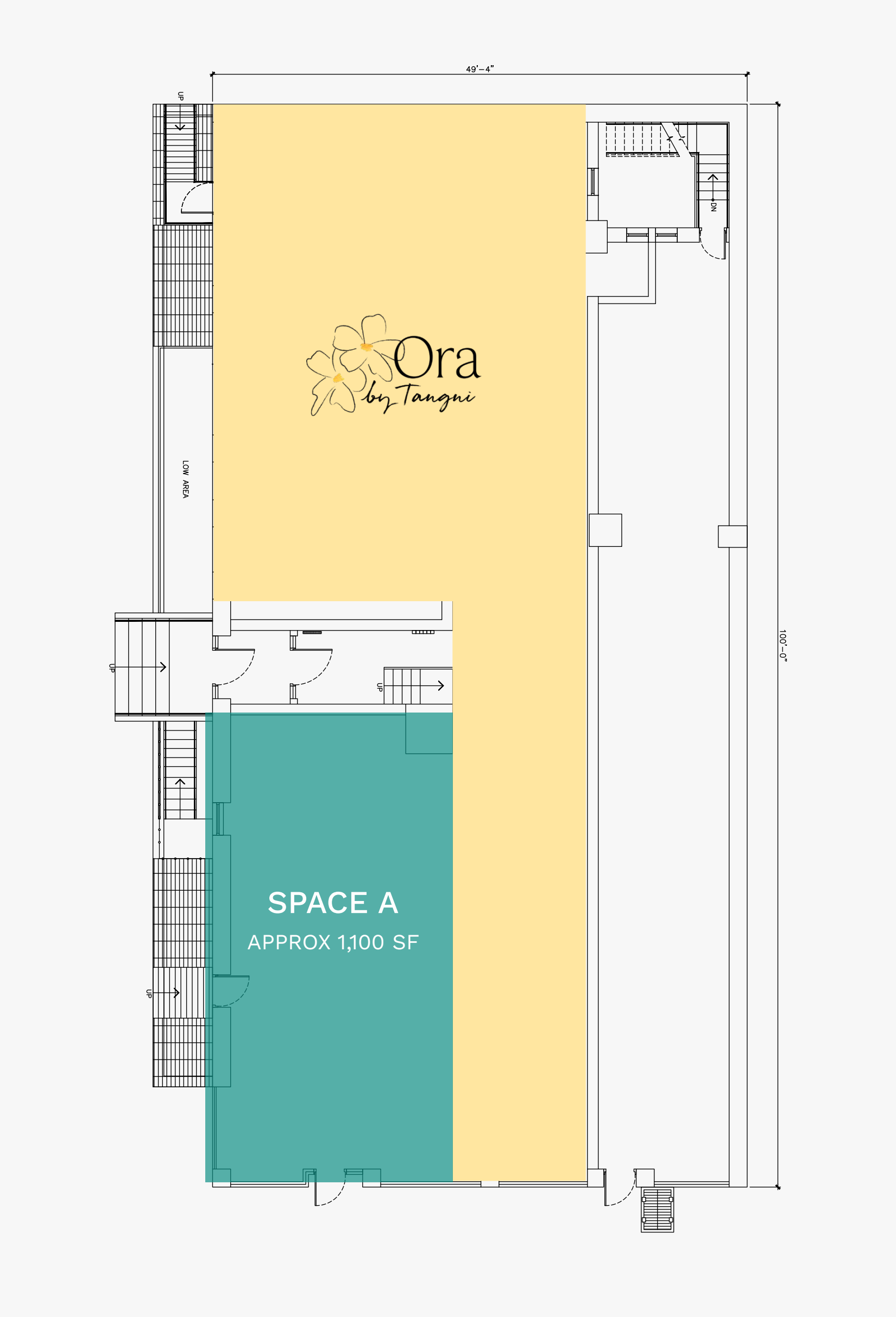
COMMENTS

- White Box inclusive of New Glass Façade, Signage Banner and Full Interior Demolition
- All uses accepted
- Space can be vented
- Gas in the building (not connected to retail premise)
- Up to 400 amps available

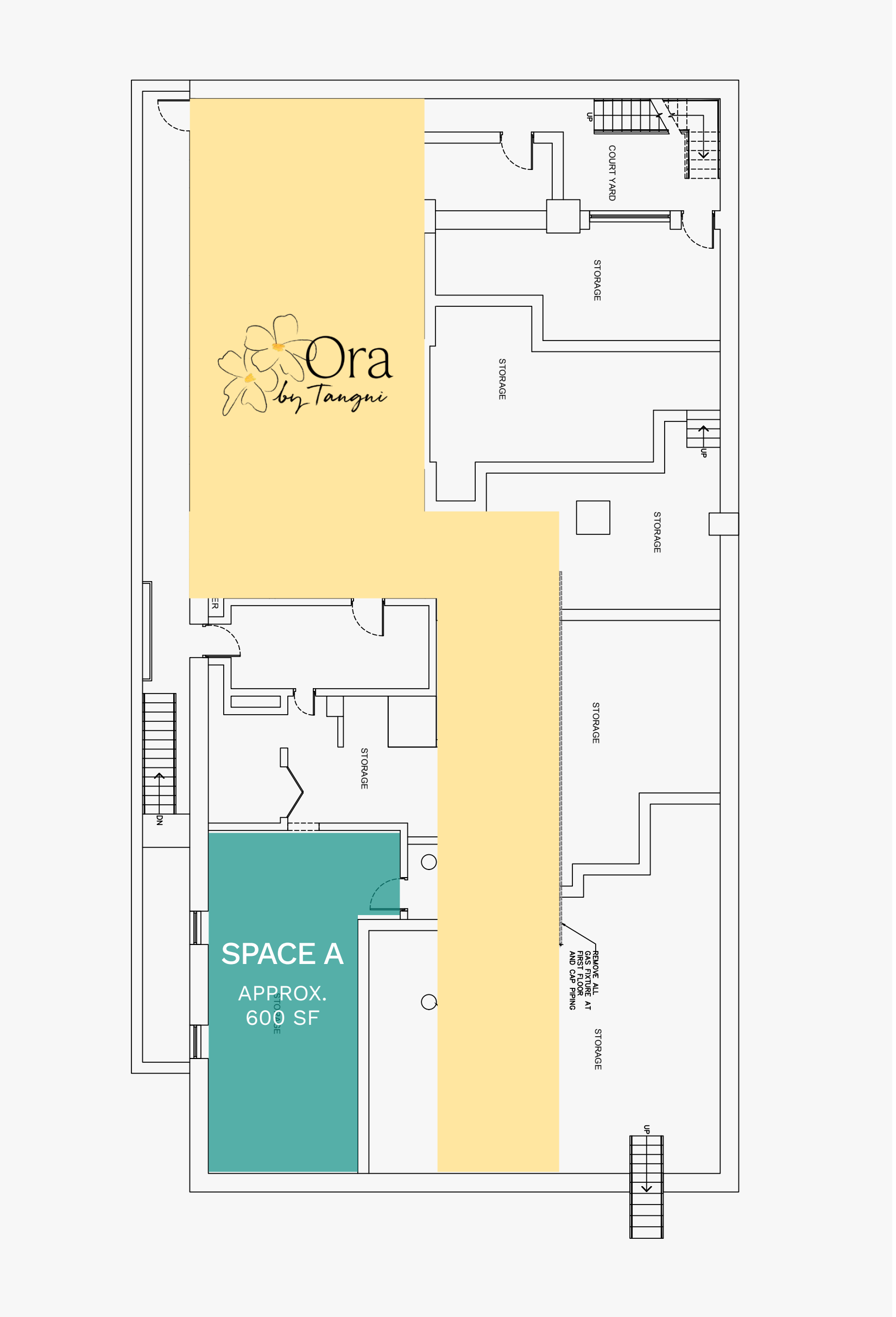
NEIGHBORS

Target, The Highline, Sullivan Street Bakery, Blink Fitness, Aesop, Gristedes, Shukette, CVS Pharmacy, Brooklyn Bagel & Coffee, QQ Nails Citizens of Chelsea, CityMD, Mermaid Inn, Chase Bank, Empire Diner, Biscuits & Bath, Blank Street Coffee, Zuckers Bagels, Joe Coffee Company, Fonda

GROUND



BASEMENT



Exterior



Interior



Neighboring Tenants





